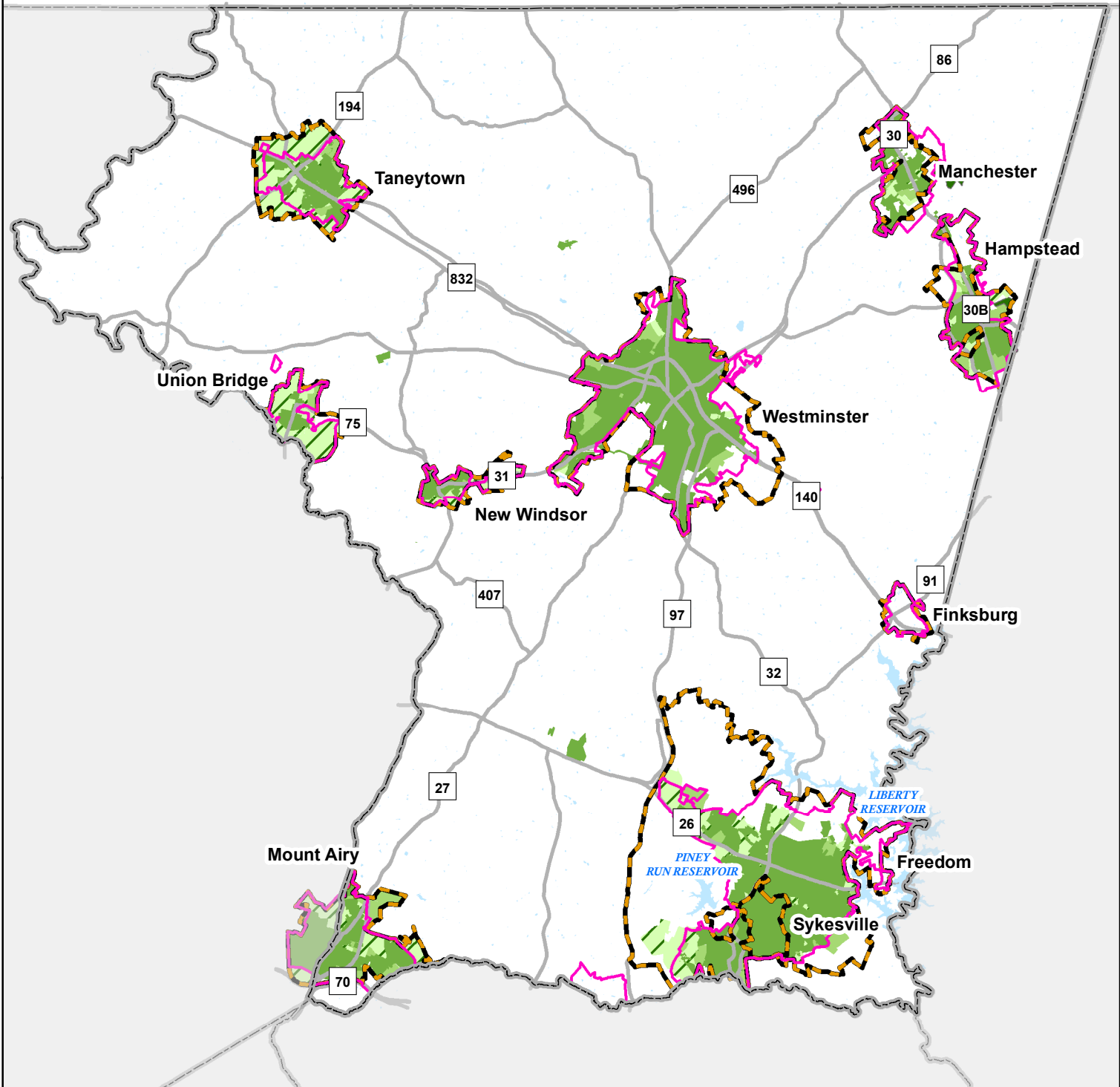


Planned Sewer Service Areas

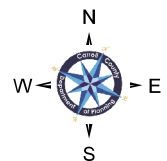


Legend

Sewer Service Area

- Existing/Final Planning
- Priority (0-6 yr)
- Future (7-10 yr)
- Long Range (10+ yr)
- Wastewater Treatment

- Priority Funding Area
- Growth Area
- Existing Reservoir
- CountyBorder



For planning purposes only.
Contact regulating agency for official data.
Prepared by the Carroll County Department of Planning, 2/23/2022(kc)