

Mr. Joseph D. McKevey  
 Airport Manager  
 Carroll County Regional Airport  
 200 Airport Drive - Box 8  
 Westminster, Maryland 21157

Re: Airport Layout Plan (ALP) Revision  
 Carroll County Regional Airport  
 Westminster, Maryland

Dear Mr. McKevey:

Our office is in receipt of the proposed ALP for the Carroll County Regional Airport, Westminster, Maryland. The revision, dated March 2015, identifies the following changes to the previously approved ALP dated June 2008. Those primary changes include the addition of phasing for the new runway, miscellaneous reconfiguration of proposed hangar and apron areas, and reconfiguration of various connector taxiways to comply with recent changes in Advisory Circular 150/5300-13A. This ALP is being considered an interim revision to the current ALP and is hereby approved with the following conditions:

The contents of the ALP revision do not necessarily reflect the official views or policies of the FAA. Approval of the ALP by the FAA does not in any way constitute a commitment on the part of the United States to participate in any development depicted therein. No additional modifications to FAA design standards are noted on the revised ALP.

All proposed development identified on the ALP requires environmental review and shall not be undertaken without prior written environmental approval by the FAA. Approval of the ALP revision does not relieve any sponsor responsibilities for ensuring compatible use of land adjacent to or in the vicinity of the airport.

This determination does not relieve the sponsor of any compliance responsibilities relating to any law, ordinance, or regulation of any Federal, State, or local governing body.

You are reminded of your continuing responsibility to keep your ALP current at all times. Each revision must be submitted to this office for review and approval prior to the start of construction. Your ALP should be reviewed at regular intervals and updated as necessary.

FAA's approval of this ALP represents acceptance of the general location of future facilities depicted. During the preliminary design phase, the airport owner is required to resubmit for approval the final locations, heights, and exterior finishes of structures. FAA's concerns are obstructions, impact on electronic aids, which could adversely affect the safety, efficiency or utility of the airport.

If you should have any questions in regards to this letter, please do not hesitate to contact me at (703) 661-1359.

Sincerely,

Original Signed By  
 Thomas A. Priscilla

Thomas A. Priscilla, Jr.  
 Washington Airports District Office

cc: Ashish Solanki, MAA  
 Roy Lewis, Delta

MARYLAND AVIATION ADMINISTRATION	
ASHISH SOLANKI, DIRECTOR	JULY 28, 2015
APPROVED	DATE

CARROLL COUNTY	
JOSEPH D. MCKEVEY, AIRPORT MANAGER	JULY 28, 2015
APPROVED	DATE



CARROLL COUNTY REGIONAL AIRPORT / JACK B. POAGE FIELD  
 200 AIRPORT DRIVE  
 WESTMINSTER, MARYLAND 21157

COVER SHEET	
<b>CARROLL COUNTY REGIONAL AIRPORT WESTMINSTER, MARYLAND</b>	
 www.deltaairport.com	
DRAWN BY: RWV	SCALE: NONE
CHECKED BY: RGL	DATE: MARCH 2015
SHEET <b>1</b> OF <b>17</b>	

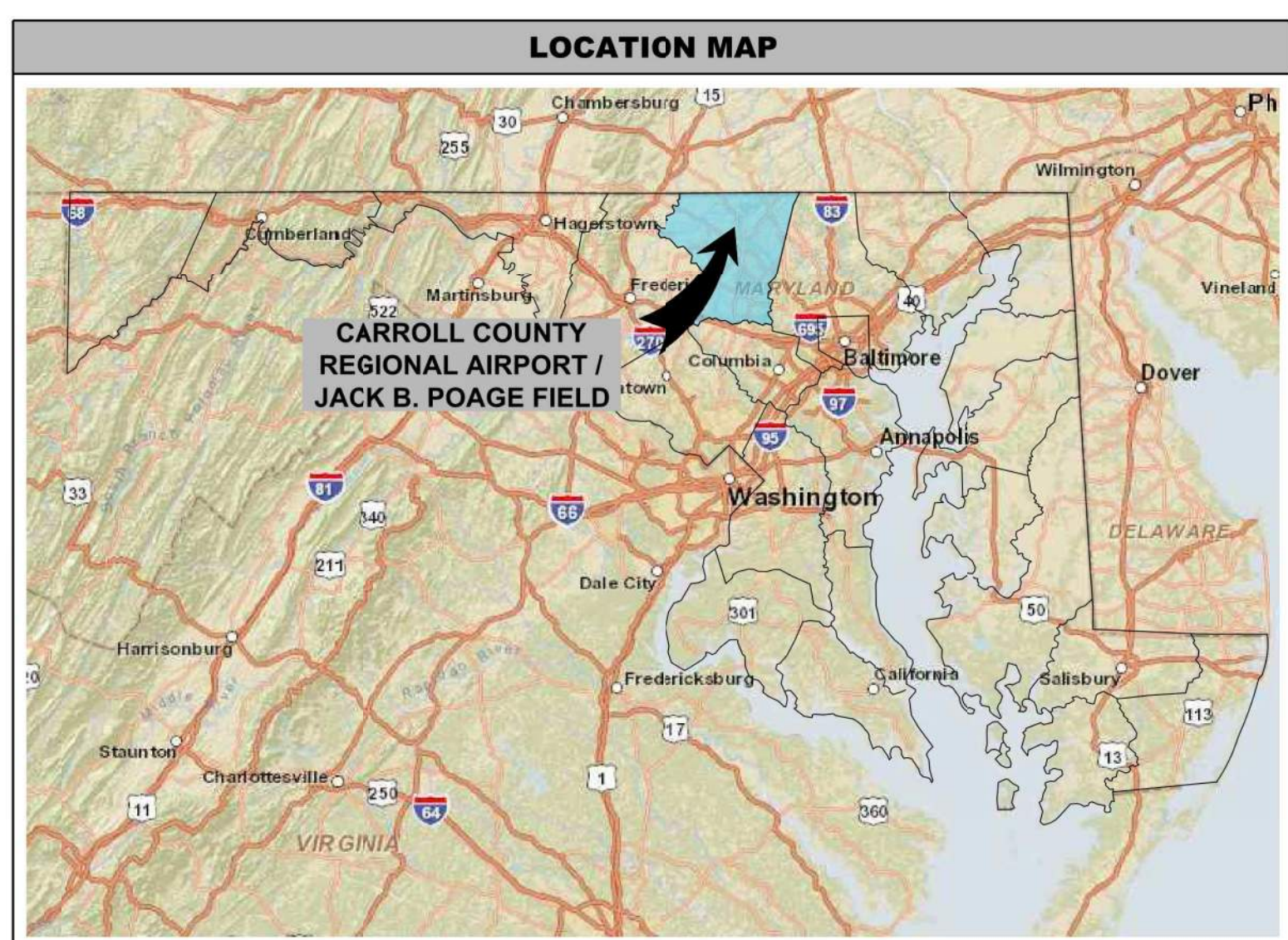
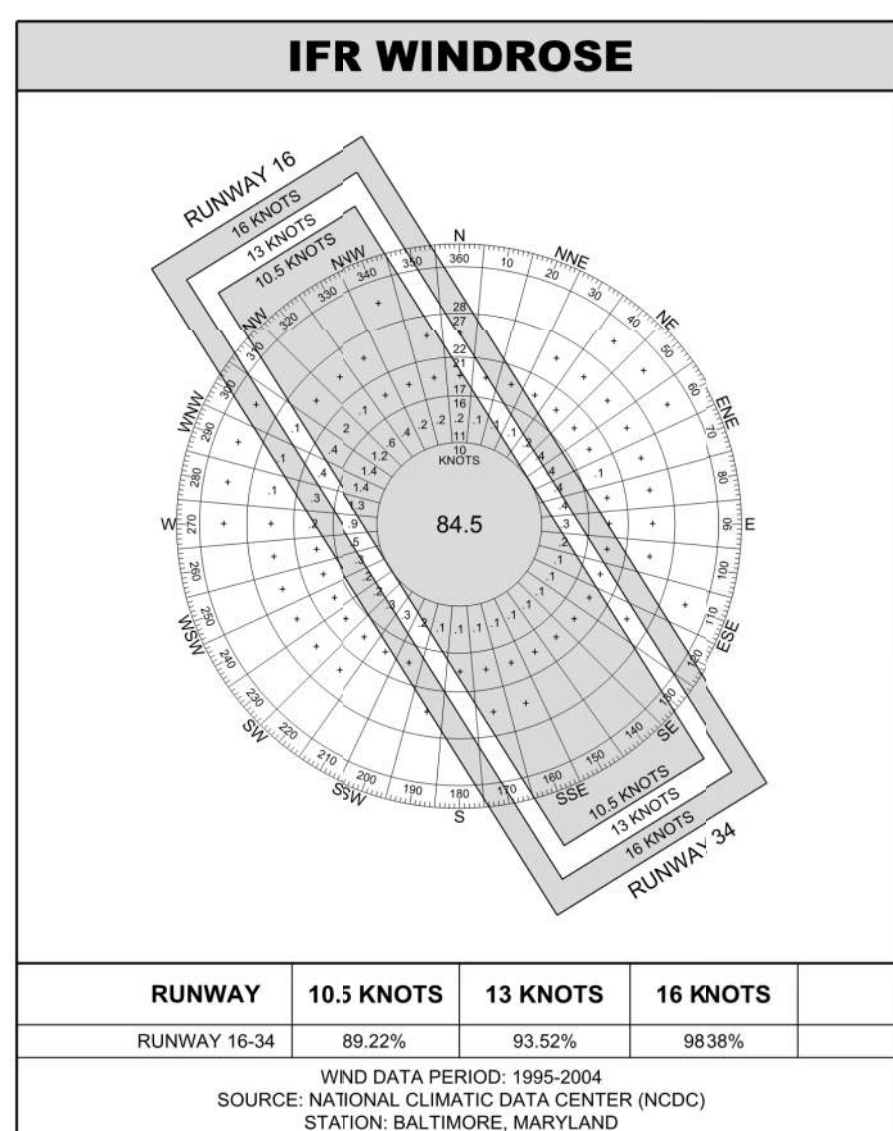
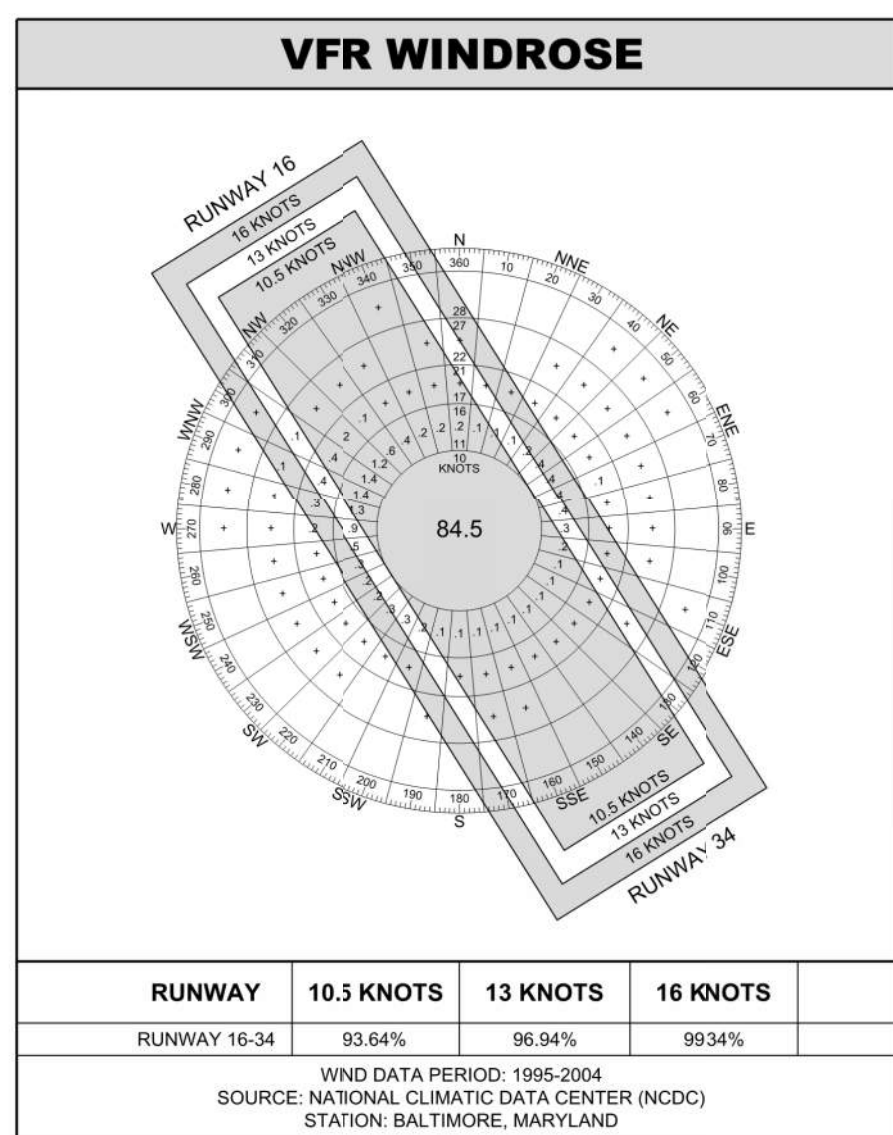
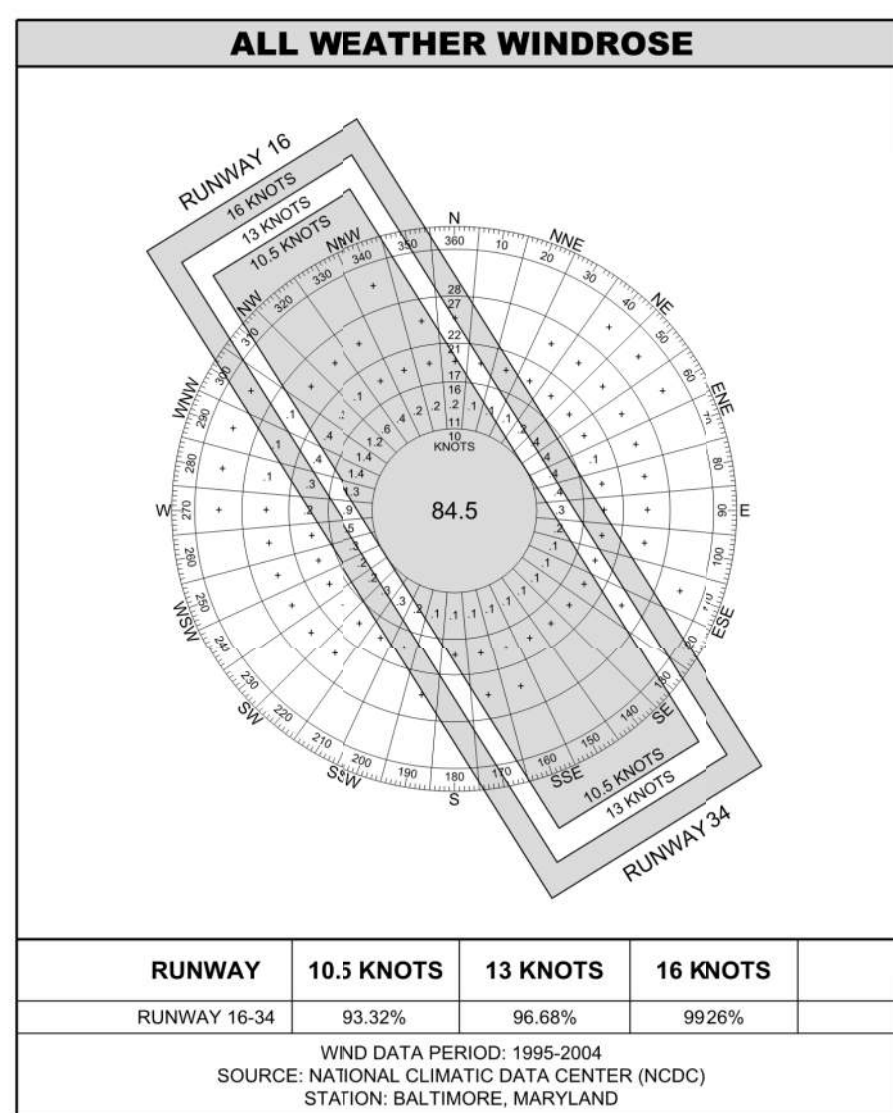
# CARROLL COUNTY REGIONAL AIRPORT

## WESTMINSTER, MARYLAND

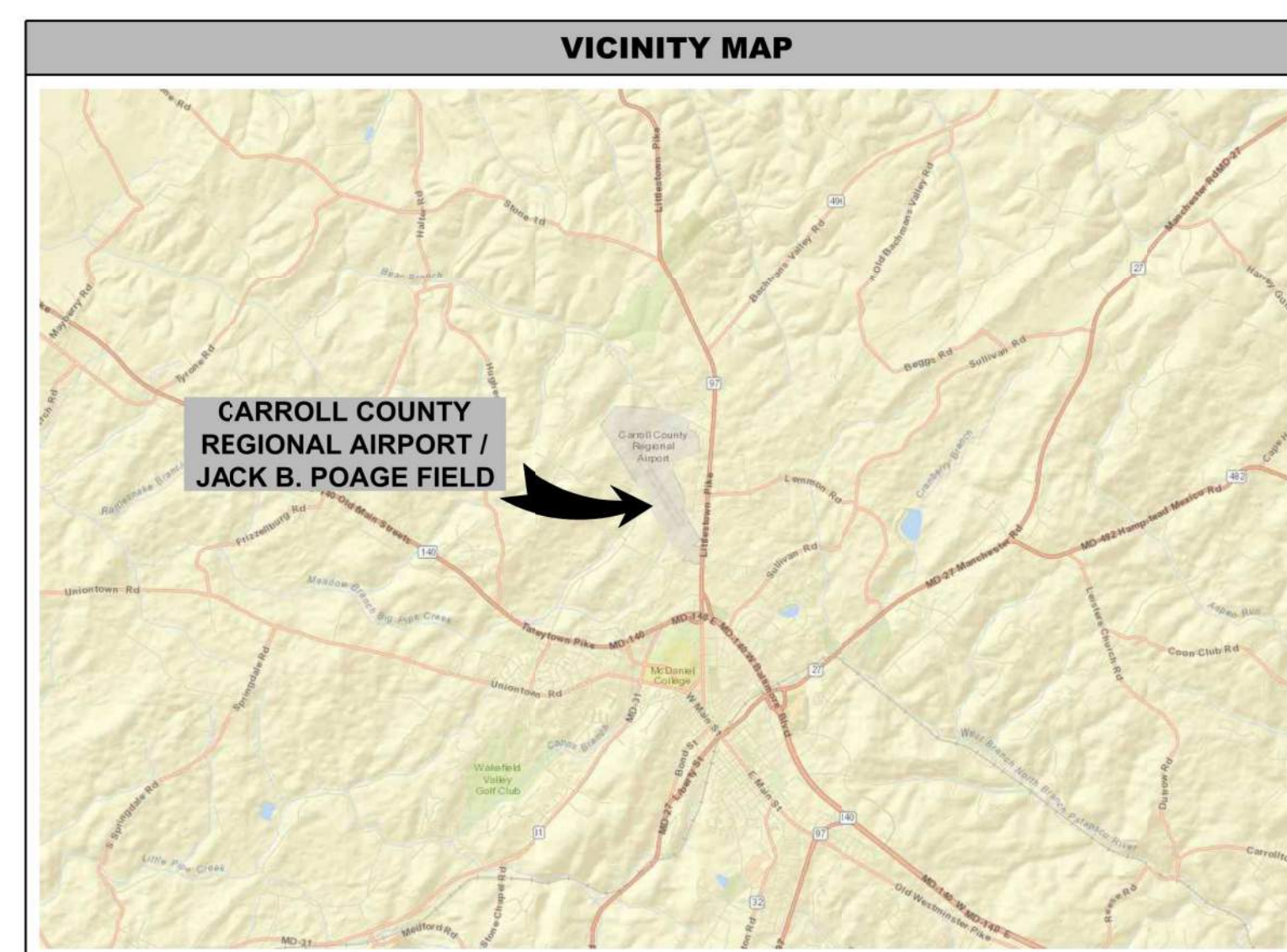
# AIRPORT LAYOUT PLAN

AIP PROJECT NO. 3-24-0028-028  
 MAA PROJECT NO. MAA-GR-14-018  
 DELTA PROJECT NO. 13063

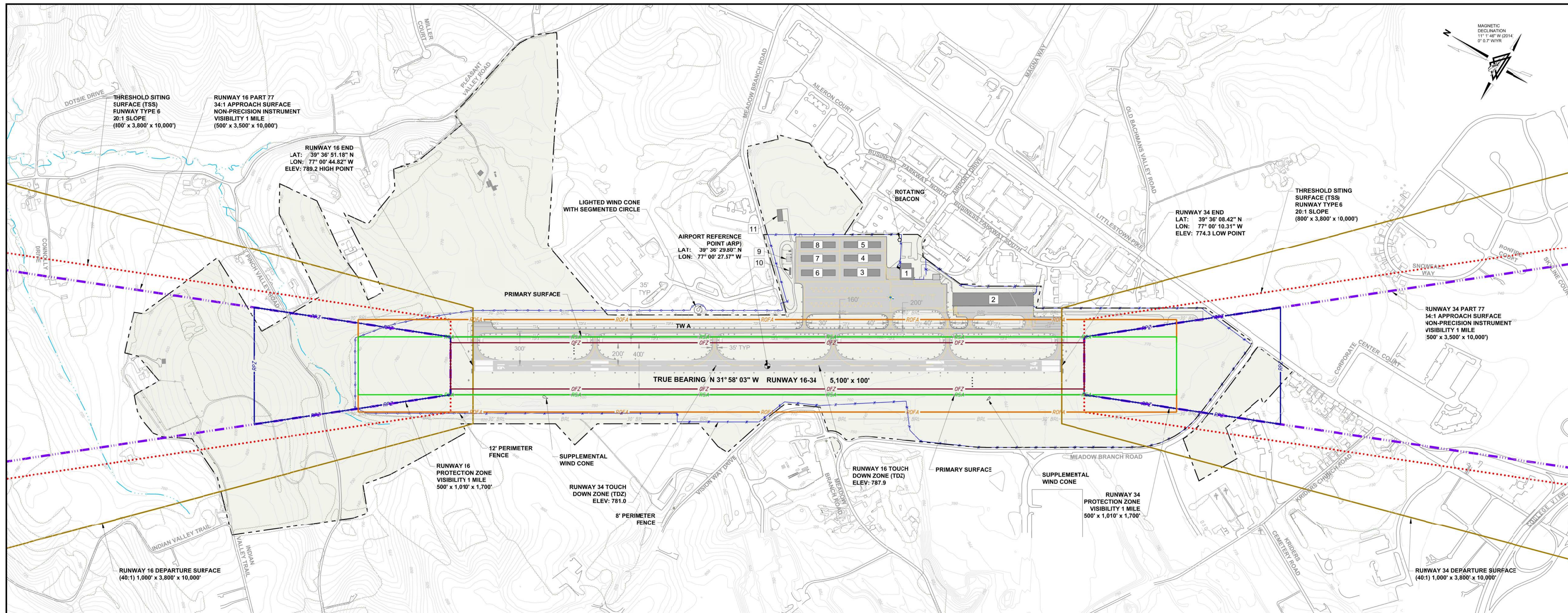
FOR THE  
 CARROLL COUNTY BOARD OF COMMISSIONERS  
 MARCH 2015



INDEX	
SHEET NO.	TITLE
1	COVER SHEET
2	EXISTING AIRPORT LAYOUT
3	AIRPORT LAYOUT PLAN
4	TERMINAL AREA PLAN
5	AIRPORT AIRSPACE DRAWING
6	AIRPORT AIRSPACE DRAWING
7	RUNWAY 16 INNER APPROACH (EXISTING)
8	RUNWAY 34 INNER APPROACH (EXISTING)
9	RUNWAY 16 INNER APPROACH (FUTURE)
10	RUNWAY 34 INNER APPROACH (FUTURE)
11	RUNWAY DEPARTURE SURFACE (EXISTING)
12	RUNWAY DEPARTURE SURFACE (FUTURE)
13	OBSTRUCTION CHARTS (EXISTING)
14	OBSTRUCTION CHARTS (FUTURE)
15	OBSTRUCTION CHARTS - RUNWAY DEPART, HORIZ. CONICAL (FUTURE)
16	LAND USE
17	AIRPORT PROPERTY MAP







RUNWAY DATA TABLE		
DESCRIPTION	RUNWAY 16	RUNWAY 34
RUNWAY DESIGN CODE (RDC)	C - II, 5,000	C - II, 5,000
RUNWAY REFERENCE CODE (RRC)	C - II, 1 MILE	C - II, 1 MILE
PAVEMENT STRENGTH/ MATERIAL TYPE	STRENGTH	SINGLE WHEEL 22,000 LBS (PCN DATA NOT AVAILABLE)
	SURFACE	ASPHALT (GROOVED)
EFFECTIVE GRADIENT (%)	0.29	0.29
WIND COVERAGE (%)	IFR: (16 KNOTS) 98.38%	IFR: (16 KNOTS) 98.38%
	ALL WEATHER: (16 KNOTS) 99.26%	ALL WEATHER: (16 KNOTS) 99.26%
RUNWAY LENGTH	5,100'	5,100'
RUNWAY WIDTH	100'	100'
RUNWAY SAFETY AREA (RSA)	500' (W) x 1,010' (L) BEYOND RW END	500' (W) x 1,010' (L) BEYOND RW END
RUNWAY END COORDINATES (NAD 83 NAVD 88)	LATITUDE	39° 36' 51.18" N
	LONGITUDE	77° 00' 44.82" W
RUNWAY LIGHTING	MIRL	
RUNWAY PROTECTION ZONE	500' x 1,010' x 1,700'	500' x 1,010' x 1,700'
RUNWAY MARKING	NON-PRECISION	
14 CFR PART 77 APPROACH SLOPE	34:1	
PART 77 APPROACH TYPE	NON-PRECISION	
VISIBILITY MINIMUMS	1 MILE	
AERONAUTICAL SURVEY TYPE	VERTICALLY GUIDED	
RUNWAY DEPARTURE SURFACE	40:1	
RUNWAY OBJECT FREE AREA (ROFA)	800' (W) x 1,000' (L) BEYOND RW END	800' (W) x 1,000' (L) BEYOND RW END
OBSTACLE FREE ZONE (OFZ)	400' (W) x 200' (L) BEYOND RW END	400' (W) x 200' (L) BEYOND RW END
THRESHOLD SITING SURFACE (TSS)	800' x 3,800' x 10,000'	
VISUAL APPROACH AIDS	REIL, PAPI (4L)	REIL, PAPI (4L)
INSTRUMENT APPROACH AIDS	RNAV (GPS)	RNAV (GPS), VOR
TOUCHDOWN ZONE (TDZ) ELEVATION	787.9	781.0
TAXIWAY WIDTH	35'	
TAXIWAY SAFETY AREA (TSA) WIDTH	79'	
TAXIWAY OBJECT FREE AREA (TOFA) WIDTH	131'	
TAXIWAY CENTERLINE TO TAXILANE CENTERLINE WIDTH	160', 200' (APRON)	
TAXIWAY LIGHTING	MITL	

- NOTES**
- THERE ARE NO KNOWN OBSTACLE FREE ZONE (OFZ) OBJECTS THAT ARE PENETRATIONS.
  - THERE ARE NO KNOWN THRESHOLD SITING SURFACE (TSS) PENETRATIONS.
  - ALL ELEVATIONS ARE IN FEET ABOVE MEAN SEA LEVEL (MSL).
  - ALL ELEVATIONS ARE IN ACCORDANCE WITH NATIONAL MAP ACCURACY STANDARDS. SPOT ELEVATIONS AND GROUND CONTOURS ARE DERIVED FROM AERIAL PHOTOGRAMMETRY AND ARE APPROXIMATE. GROUND SURVEYS ARE RECOMMENDED TO VERIFY ACCURACY.
  - ALL LATITUDE AND LONGITUDE COORDINATES ARE NAD 83/ NAVD88.
  - TOPOGRAPHY AND PLANIMETRICS OBTAINED FROM PREVIOUS AIRPORT LAYOUT PLAN AERIAL SURVEYS FROM HARFORD AERIALS SURVEYS, INC., DATED OCTOBER 2004.
  - LEGEND ELEMENTS REPRESENT DEPICTIONS ON DRAWING BUT MAY VARY IN SIZE DUE TO SCALING ON DRAWING.

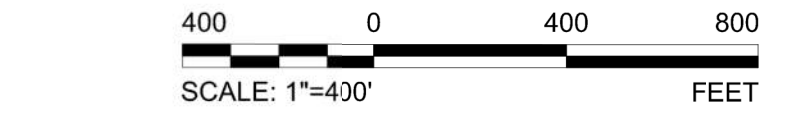
MODIFICATIONS OF DESIGN STANDARDS					
NO.	STANDARD MODIFIED	FAA STANDARDS	EXISTING CONDITION	FUTURE ACTION	DATE APPROVED
--	NONE	NONE	NONE	NONE	NONE

AIRPORT DATA TABLE	
AIRPORT REFERENCE CODE (ARC)	C - II
MEAN MAX. TEMPERATURE HOTTEST MONTH	85° F (JULY)
AIRPORT ELEVATION	789.2
AIRPORT NAVIGATIONAL AIDS (COUNTY OWNED)	MIRL, REIL, PAPI, ROTATING BEACON, LIGHTED WIND INDICATOR, RNAV (GPS), VOR
AIRPORT REFERENCE POINT (NAD 83/ NAVD 88)	LATITUDE: 39° 36' 29.80" N LONGITUDE: 77° 00' 27.57" W
CRITICAL AIRCRAFT	GRUMMAN (G-III)
AIRPORT MAGNETIC DECLINATION	11° 1' 46" (2014), 0° 0.7" W/YR
NPIAS SERVICE LEVEL	REGIONAL
STATE SERVICE LEVEL	RELIEVER

FACILITIES TABLE		
#	FACILITY NAME	TOP ELEV
1	ADMINISTRATION BUILDING/ FBO	810
2	CORPORATE HANGARS (7 UNITS)	808
3	T-HANGARS (14 UNITS)	806
4	T-HANGARS (14 UNITS)	804
5	T-HANGARS (14 UNITS)	801
6	T-HANGARS (14 UNITS)	804
7	T-HANGARS (14 UNITS)	803
8	T-HANGARS (14 UNITS)	802
9	FUEL FARM	790
10	CIVIL AIR CONTROL BUILDING	800
11	AIRPORT OPERATIONS CENTER	800

LEGEND	
DESCRIPTION	EXISTING
AIRPORT BUILDINGS	[Symbol]
AIRPORT PROPERTY	[Symbol]
PAVEMENT	[Symbol]
RUNWAY CENTERLINE	[Symbol]
TAXIWAY/TAXILANE MARKING	[Symbol]
BUILDING RESTRICTION LINE (BRL)	[Symbol]
FENCE	[Symbol]
FENCE (8 FT PERIMETER)	[Symbol]
FENCE (12 FT PERIMETER)	[Symbol]
GROUND ELEVATION CONTOURS	[Symbol]
OBSTACLE FREE ZONE (OFZ)	[Symbol]
PART 77 APPROACH SURFACE	[Symbol]
RUNWAY DEPARTURE SURFACE	[Symbol]
RUNWAY OBJECT FREE AREA (ROFA)	[Symbol]
RUNWAY PROTECTION ZONE (RPZ)	[Symbol]
RUNWAY SAFETY AREA (RSA)	[Symbol]
STREAM	[Symbol]
TAXIWAY OBJECT FREE AREA (TOFA)	[Symbol]
TAXIWAY SAFETY AREA (TSA)	[Symbol]
THRESHOLD SITING SURFACE (TSS)	[Symbol]
TREE LINE	[Symbol]
AIRPORT REFERENCE POINT (ARP)	[Symbol]
ROTATING BEACON	[Symbol]
VISUAL APPROACH SLOPE INDICATOR (PAPI)	[Symbol]
WIND CONE/ WINDSOCK	[Symbol]

NO.	REVISIONS	BY	APP.	DATE



**EXISTING AIRPORT LAYOUT**

**CARROLL COUNTY REGIONAL AIRPORT**  
WESTMINSTER, MARYLAND

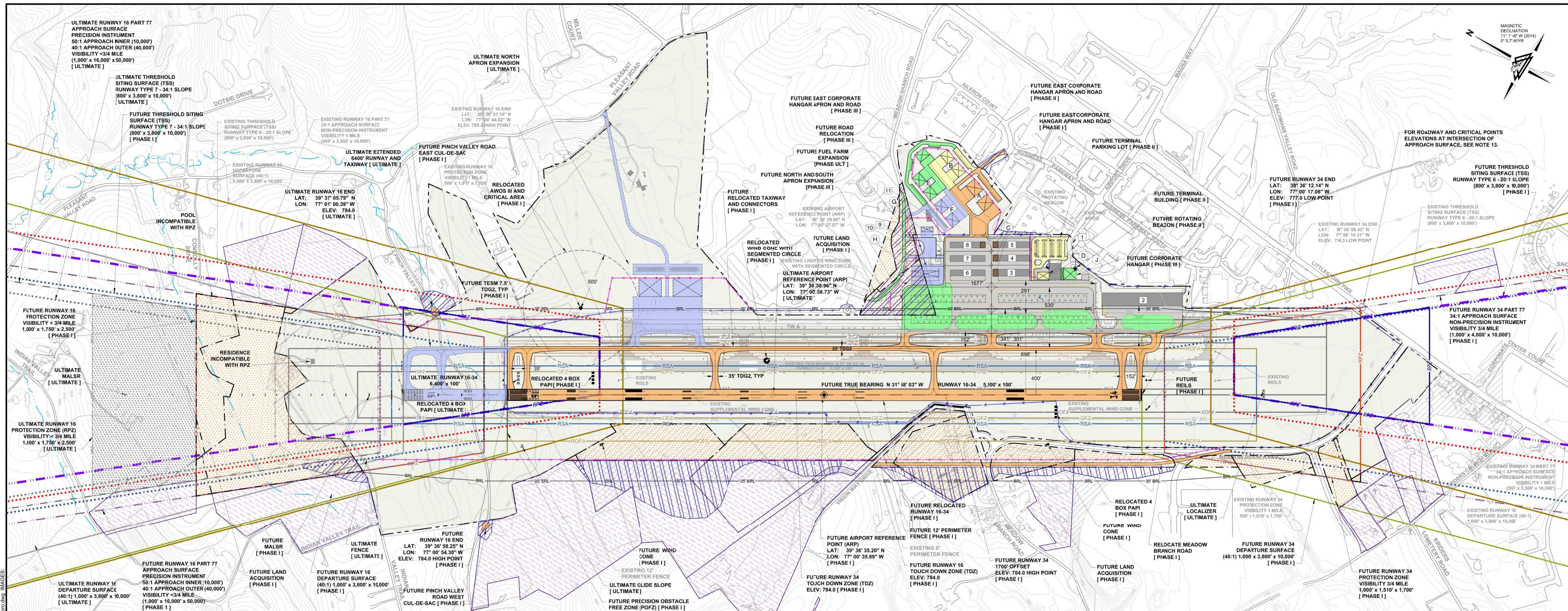
**DELTA AIRPORT CONSULTANTS, INC.**  
www.deltairport.com

DRAWN BY: RWW SCALE: 1" = 400'  
CHECKED BY: RGL DATE: MARCH 2015

SHEET **2** OF **17**

N:\1365304\CAD\1365304-1.dwg, L: 4/15/2015 9:47:05 AM, rww  
 DRAWING: 1365304-1.dwg LAYOUT: L1  
 PLOT: 1365304-1.dwg L1  
 PLOT: 1365304-1.dwg L1  
 PLOT: 1365304-1.dwg L1





AIRPORT DATA TABLE			
DATA	EXISTING	FUTURE	ULTIMATE
AIRPORT REFERENCE CODE (ARC)	C - II	C - II	C - II
MEAN MAX. TEMPERATURE HOTTTEST MONTH	85° F (JULY)	85° F (JULY)	85° F (JULY)
AIRPORT ELEVATION	789	784	784
AIRPORT NAVIGATIONAL AIDS	MIRL, REIL, PAPI, ROTATING BEACON, LIGHTED WIND INDICATOR, RNAV (GPS), VOR, MALSR	MIRL, REIL, PAPI, ROTATING BEACON, LIGHTED WIND INDICATOR, RNAV (GPS), VOR, MALSR	MIRL, REIL, PAPI, ROTATING BEACON, LIGHTED WIND INDICATOR, RNAV (GPS), VOR, MALSR
AIRPORT REFERENCE POINT (ND 83 NAVD 88)	LATITUDE: 39° 36' 29.80" N LONGITUDE: 77° 00' 27.57" W	LATITUDE: 39° 36' 35.20" N LONGITUDE: 77° 00' 35.69" W	LATITUDE: 39° 36' 38.96" N LONGITUDE: 77° 00' 38.73" W
CRITICAL AIRCRAFT	GRUMMAN (G-III)	CHALLENGER 605	CHALLENGER 605
AIRPORT MAGNETIC DECLINATION	CHANGE 0.7 W/ YR	CHANGE 0.7 W/ YR	CHANGE 0.7 W/ YR
NFAS SERVICE LEVEL	REGIONAL	REGIONAL	REGIONAL
STATE SERVICE LEVEL	RELIEVER	RELIEVER	RELIEVER

EXISTING FACILITIES TABLE				FUTURE			
REF	FACILITY NAME	TOP ELEV.	REF	FACILITY NAME	TOP ELEV. (APPROX)		
1	ADMINISTRATION BUILDING (FBO)	817	A	CORPORATE HANGARS [I]	808 ±		
2	CORPORATE HANGARS (7 UNITS)	809	B	BOX HANGARS [II]	808 ±		
3	T-HANGARS (14 UNITS)	809	C	T-HANGARS DEMOLITION [I]	806 ±		
4	T-HANGARS (14 UNITS)	809	D	TERMINAL BUILDING [I]	810 ±		
5	T-HANGARS (14 UNITS)	809	E	BOX HANGARS [III]	806 ±		
6	T-HANGARS (14 UNITS)	809	F	BOX HANGARS [ULT]	806 ±		
7	T-HANGARS (14 UNITS)	809	G	RELOCATED MAINTENANCE EQUIPMENT STORAGE (MES) BUILDING [ULT]	806 ±		
8	T-HANGARS (14 UNITS)	802	H	T-HANGARS [ULT]	806 ±		
9	FUEL TANK	799	I	CORPORATE HANGARS [ULT]	824 ±		
10	CIVIL AIR CONTROL BUILDING	809	J	CORPORATE HANGARS [III]	808 ±		
11	AIRPORT OPERATION CENTER	809					

- ### NOTES
- FAA'S APPROVAL OF THIS AIRPORT LAYOUT PLAN (ALP) REPRESENTS ACCEPTANCE OF THE GENERAL LOCATION OF THE ULTIMATE FACILITIES DEPICTED, DURING THE PRELIMINARY DESIGN PHASE. THE AIRPORT OWNER IS REQUIRED TO SUBMIT FOR APPROVAL THE FINAL LOCATIONS, HEIGHTS AND EXTERIOR FINISHES OF STRUCTURES. FAA'S CONCERNS ARE OBSTRUCTIONS, IMPACT ON ELECTRONIC AIDS AND ADVERSE EFFECT ON CONTROLLER VIEW OF AIRCRAFT APPROACHES AND GROUND MOVEMENTS, WHICH COULD ADVERSELY AFFECT THE SAFETY, EFFICIENCY OR UTILITY OF THE AIRPORT.
  - ALP APPROVAL BY THE FAA IS CONDITIONED ON ACKNOWLEDGEMENT THAT ANY DEVELOPMENT ON AIRPORT PROPERTY REQUIRING FEDERAL ENVIRONMENTAL APPROVAL, MUST RECEIVE SUCH WRITTEN APPROVAL FROM FAA PRIOR TO COMMENCEMENT OF THE SUBJECT DEVELOPMENT. THIS ALP APPROVAL IS ALSO CONDITIONED ON ACCEPTANCE OF THE PLAN UNDER LOCAL LAND USE LAWS.
  - ALL ELEVATIONS ARE IN FEET ABOVE MEAN SEA LEVEL.
  - ALL ELEVATIONS ARE IN ACCORDANCE WITH NATIONAL MAP ACCURACY STANDARDS. SPOT ELEVATIONS AND GROUND CONTOURS ARE DERIVED FROM AERIAL PHOTOGRAMMETRY AND ARE APPROXIMATE. GROUND SURVEYS ARE RECOMMENDED TO VERIFY ACCURACY.
  - ALL LATITUDE AND LONGITUDE COORDINATES ARE NAD 83 NAVD 88.
  - THERE ARE NO KNOWN OBJECTS THAT PENETRATE THE THRESHOLD SITING SURFACE.
  - TOPOGRAPHY AND PLANIMETRICS OBTAINED FROM AERIAL SURVEYS FROM WOODPERT, INC. DATED FEBRUARY 7, 2014.
  - ALL ULTIMATE DEVELOPMENT MUST MEET THE FULL DESIGN STANDARDS LISTED IN FAA AC 150/5000-13A.
  - THE BUILDING RESTRICTION LINE (BRL) SHOULD BE LOCATED ON AN AIRPORT LAYOUT PLAN TO IDENTIFY SUITABLE LOCATIONS FOR BUILDING AREAS ON AIRPORT PROPERTY. THE BRL IS DEPICTED BASED ON FAR PART 77 SURFACE FOR A GIVEN DISTANCE FROM THE RUNWAY CENTERLINE. SPECIFIC SITE DEVELOPMENT MUST BE FURTHER EVALUATED BASED ON TOP ELEVATION OF FUTURE STRUCTURE. IT IS RECOMMENDED THAT THE BRL ENCOMPASS THE RUNWAY PROTECTION ZONE, THE RUNWAY VISIBILITY ZONE, AND AREAS REQUIRED FOR AIRPORT TRAFFIC CONTROL TOWER CLEAR LINES OF SIGHT.
  - THE TOP ELEVATIONS FOR FUTURE FACILITIES ARE APPROXIMATE.
  - THERE ARE NO KNOWN OBSTACLE FREE ZONE (OFZ) OBJECTS THAT ARE PENETRATIONS.
  - ULTIMATE FACILITY DEVELOPMENT CONCEPTS ARE DEPICTED FOR PLANNING PURPOSES ONLY. IT SHOULD BE NOTED THAT TERRAIN CONDITIONS (ELEVATION OR DENSITY) MAY IMPACT FINANCIAL FEASIBILITY OF FACILITIES AS DEPICTED. IN ADDITION, THE BUILDING HEIGHTS ARE TO BE REASSESSED AT THE TIME OF FACILITY DEVELOPMENT TO ENSURE THERE ARE NO PENETRATIONS TO THE CURRENT 14 CFR PART 77 SURFACE.
  - ROADWAYS ELEVATIONS WHERE THEY INTERSECT APPROACH SURFACES, EXTENDED RUNWAY CENTERLINE AND AT THE MOST CRITICAL POINTS ARE DEPICTED ON THE INNER APPROACH PLAN AND PROFILE SHEETS.
  - LEGEND ELEMENTS REPRESENT DEPICTIONS ON DRAWING BUT MAY VARY IN SIZE DUE TO SCALING ON DRAWING.
  - FUTURE RUNWAY MEETS BOTH FAA AND MAA LINE OF SIGHT REQUIREMENTS.

DESCRIPTION	EXISTING		FUTURE		ULTIMATE	
	RUNWAY 16	RUNWAY 34	RUNWAY 16	RUNWAY 34	RUNWAY 16	RUNWAY 34
RUNWAY DESIGN CODE (RDC)	C - II, 5,000	C - II, 5,000	C - II, 2,400	C - II, 4,000	C - II, 2,400	C - II, 4,000
RUNWAY REFERENCE CODE (RRC)	C - II, 1 MILE	C - II, 1 MILE	C - II, <3/4 MILE	C - II, 3/4 MILE	C - II, <3/4 MILE	C - II, 3/4 MILE
PAVEMENT STRENGTH/MATERIAL TYPE	SINGLE WHEEL 22,000 LBS ASPHALT (GROOVED)	SINGLE WHEEL 22,000 LBS ASPHALT (GROOVED)	DUAL WHEEL 91,000 LBS ASPHALT (GROOVED)	DUAL WHEEL 91,000 LBS ASPHALT (GROOVED)	DUAL WHEEL 91,000 LBS ASPHALT (GROOVED)	DUAL WHEEL 91,000 LBS ASPHALT (GROOVED)
EFFECTIVE GRADIENT (%)	0.29	0.29	0.39	0.39	0.39	0.39
WIND COVERAGE (%)	IFR: (16 KNOTS) 98.38% ALL WEATHER: (16 KNOTS) 99.26%	IFR: (16 KNOTS) 98.38% ALL WEATHER: (16 KNOTS) 99.26%	IFR: (16 KNOTS) 98.38% ALL WEATHER: (16 KNOTS) 99.26%	IFR: (16 KNOTS) 98.38% ALL WEATHER: (16 KNOTS) 99.26%	IFR: (16 KNOTS) 98.38% ALL WEATHER: (16 KNOTS) 99.26%	IFR: (16 KNOTS) 98.38% ALL WEATHER: (16 KNOTS) 99.26%
RUNWAY LENGTH	5,100'	5,100'	6,400'	6,400'	100'	100'
RUNWAY WIDTH	100'	100'	100'	100'	100'	100'
RUNWAY SAFETY AREA (RSA)	500' (W) x 1,000' (L) BEYOND RW END	500' (W) x 1,000' (L) BEYOND RW END	300' (W) x 1,000' (L) BEYOND RW END	500' (W) x 1,000' (L) BEYOND RW END	500' (W) x 1,000' (L) BEYOND RW END	500' (W) x 1,000' (L) BEYOND RW END
RUNWAY END COORDINATES (ND 83 NAVD 88)	LATITUDE: 39° 36' 51.10" N LONGITUDE: 77° 00' 44.82" W	LATITUDE: 39° 36' 58.42" N LONGITUDE: 77° 00' 10.31" W	LATITUDE: 39° 36' 58.42" N LONGITUDE: 77° 00' 54.30" W	LATITUDE: 39° 37' 05.79" N LONGITUDE: 77° 00' 17.08" W	LATITUDE: 39° 37' 05.79" N LONGITUDE: 77° 00' 30.39" W	LATITUDE: 39° 36' 12.14" N LONGITUDE: 77° 00' 17.08" W
RUNWAY LIGHTING	MIRL	MIRL	MIRL	MIRL	MIRL	MIRL
RUNWAY PROTECTION ZONE	500' x 1,010' x 1,700'	500' x 1,010' x 1,700'	1,000' x 1,750' x 2,500'	1,000' x 1,510' x 1,700'	1,000' x 1,750' x 2,500'	1,000' x 1,510' x 1,700'
RUNWAY MARKING	NON-PRECISION	PRECISION	NON-PRECISION	PRECISION	NON-PRECISION	NON-PRECISION
14 CFR PART 77 APPROACH SLOPE	34:1	34:1	50:1	34:1	50:1	34:1
PART 77 APPROACH TYPE	NON-PRECISION	NON-PRECISION	PRECISION	NON-PRECISION	PRECISION	NON-PRECISION
VISIBILITY MINIMUMS	1 MILE	1 MILE	<3/4 MILE	3/4 MILE	<3/4 MILE	3/4 MILE
AERONAUTICAL SURVEY TYPE	VERTICALLY GUIDED	VERTICALLY GUIDED	VERTICALLY GUIDED	VERTICALLY GUIDED	VERTICALLY GUIDED	VERTICALLY GUIDED
RUNWAY DEPARTURE SURFACE	40:1	40:1	40:1	40:1	40:1	40:1
RUNWAY OBJECT FREE AREA (ROFA)	800' (W) x 1,000' (L) BEYOND RW END	800' (W) x 1,000' (L) BEYOND RW END	800' (W) x 1,000' (L) BEYOND RW END	800' (W) x 1,000' (L) BEYOND RW END	800' (W) x 1,000' (L) BEYOND RW END	800' (W) x 1,000' (L) BEYOND RW END
OBSTACLE FREE ZONE (OFZ)	400' (W) x 200' (L) BEYOND RW END	400' (W) x 200' (L) BEYOND RW END	400' (W) x 200' (L) BEYOND RW END	400' (W) x 200' (L) BEYOND RW END	400' (W) x 200' (L) BEYOND RW END	400' (W) x 200' (L) BEYOND RW END
THRESHOLD SITING SURFACE (TSS)	800' x 3,800' x 10,000'	800' x 3,800' x 10,000'	800' x 3,800' x 10,000'	800' x 3,800' x 10,000'	800' x 3,800' x 10,000'	800' x 3,800' x 10,000'
VISUAL APPROACH AIDS	REIL, PAPI (4L)	REIL, PAPI (4L)	MALSR, PAPI (4L)	REIL, PAPI (4L)	MALSR, PAPI (4L)	REIL, PAPI (4L)
INSTRUMENT APPROACH AIDS	RNAV (GPS)	RNAV (GPS), VOR	RNAV (GPS)	RNAV (GPS), VOR	RNAV (GPS)	RNAV (GPS), VOR
TOUCHDOWN ZONE (TDZ) ELEVATION	787.9	781.0	784.0	784.0	784.0	784.0
TAXIWAY WIDTH	35'	35'	35'	35'	35'	35'
TAXIWAY SAFETY AREA (TSA) WIDTH	79'	79'	79'	79'	79'	79'
TAXIWAY OBJECT FREE AREA (TOFA) WIDTH	131'	131'	131'	131'	131'	131'
TAXIWAY CENTERLINE TO TAXIWAY CENTERLINE WIDTH	160', 200' (APRON)	160', 200' (APRON)	152', 341', 531' (APRON)	152', 341', 531' (APRON)	152', 341', 531' (APRON)	152', 341', 531' (APRON)
TAXIWAY LIGHTING	EDGE, MTL	EDGE, MTL	EDGE, MTL	EDGE, MTL	EDGE, MTL	EDGE, MTL

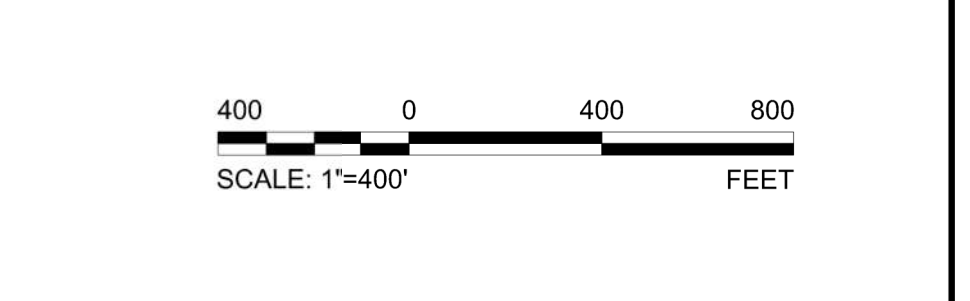
DESCRIPTION	LEGEND		
	EXISTING	FUTURE	ULTIMATE
AIRPORT BUILDINGS	[Symbol]	[Symbol]	[Symbol]
AIRPORT PROPERTY	[Symbol]	[Symbol]	[Symbol]
AVIATION EASEMENTS	[Symbol]	[Symbol]	[Symbol]
DEMOLITION	[Symbol]	[Symbol]	[Symbol]
PAVEMENT	[Symbol]	[Symbol]	[Symbol]
RUNWAY CENTERLINE	[Symbol]	[Symbol]	[Symbol]
TAXIWAY TAXIWAY MARKING	[Symbol]	[Symbol]	[Symbol]
BUILDING RESTRICTION LINE (BRL)	[Symbol]	[Symbol]	[Symbol]
FENCE (8 FT PERIMETER)	[Symbol]	[Symbol]	[Symbol]
FENCE (12 FT PERIMETER)	[Symbol]	[Symbol]	[Symbol]
GROUND ELEVATION CONTOURS	[Symbol]	[Symbol]	[Symbol]
OBSTACLE FREE ZONE (OFZ)	[Symbol]	[Symbol]	[Symbol]
PART 77 APPROACH SURFACE	[Symbol]	[Symbol]	[Symbol]
PRECISION OBSTACLE FREE ZONE (POFZ)	[Symbol]	[Symbol]	[Symbol]
RUNWAY DEPARTURE SURFACE	[Symbol]	[Symbol]	[Symbol]
RUNWAY OBJECT FREE AREA (ROFA)	[Symbol]	[Symbol]	[Symbol]
RUNWAY PROTECTION ZONE (RPZ)	[Symbol]	[Symbol]	[Symbol]
RUNWAY SAFETY AREA (RSA)	[Symbol]	[Symbol]	[Symbol]
STREAM	[Symbol]	[Symbol]	[Symbol]
TAXIWAY OBJECT FREE AREA (TOFA)	[Symbol]	[Symbol]	[Symbol]
TAXIWAY SAFETY AREA (TSA)	[Symbol]	[Symbol]	[Symbol]
THRESHOLD SITING SURFACE (TSS)	[Symbol]	[Symbol]	[Symbol]
TREE LINE	[Symbol]	[Symbol]	[Symbol]
AIRPORT REFERENCE POINT (ARP)	[Symbol]	[Symbol]	[Symbol]
AUTOMATED WEATHER OBSERVING SYSTEM (AWOS)	[Symbol]	[Symbol]	[Symbol]
ROTATING BEACON	[Symbol]	[Symbol]	[Symbol]
VISUAL APPROACH SLOPE INDICATOR (PAPI)	[Symbol]	[Symbol]	[Symbol]
WIND CONE	[Symbol]	[Symbol]	[Symbol]
WIND CONE WITH SEGMENTED CIRCLE	[Symbol]	[Symbol]	[Symbol]

DEVELOPMENT PROGRAM			
PHASE I DEVELOPMENT	[Color]		
PHASE II DEVELOPMENT	[Color]		
PHASE III DEVELOPMENT	[Color]		
ULTIMATE DEVELOPMENT	[Color]		

NO.	REVISIONS	BY	APP.	DATE

CARROLL COUNTY	
JOSEPH D. MCKELVEY, AIRPORT MANAGER	JULY 28, 2015
NAME AND TITLE APPROVAL DATE	
MARYLAND AVIATION ADMINISTRATION	
ASHISH SOLANKI, DIRECTOR	JULY 28, 2015
NAME AND TITLE APPROVAL DATE	
FEDERAL AVIATION ADMINISTRATION	
THOMAS A. PRISCILLA JR., METRO ENGINEER	JULY 28, 2015
NAME AND TITLE APPROVAL DATE	



**AIRPORT LAYOUT PLAN**

**CARROLL COUNTY REGIONAL AIRPORT**  
**WESTMINSTER, MARYLAND**

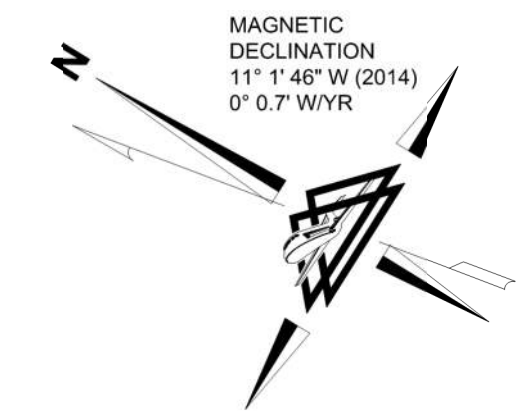
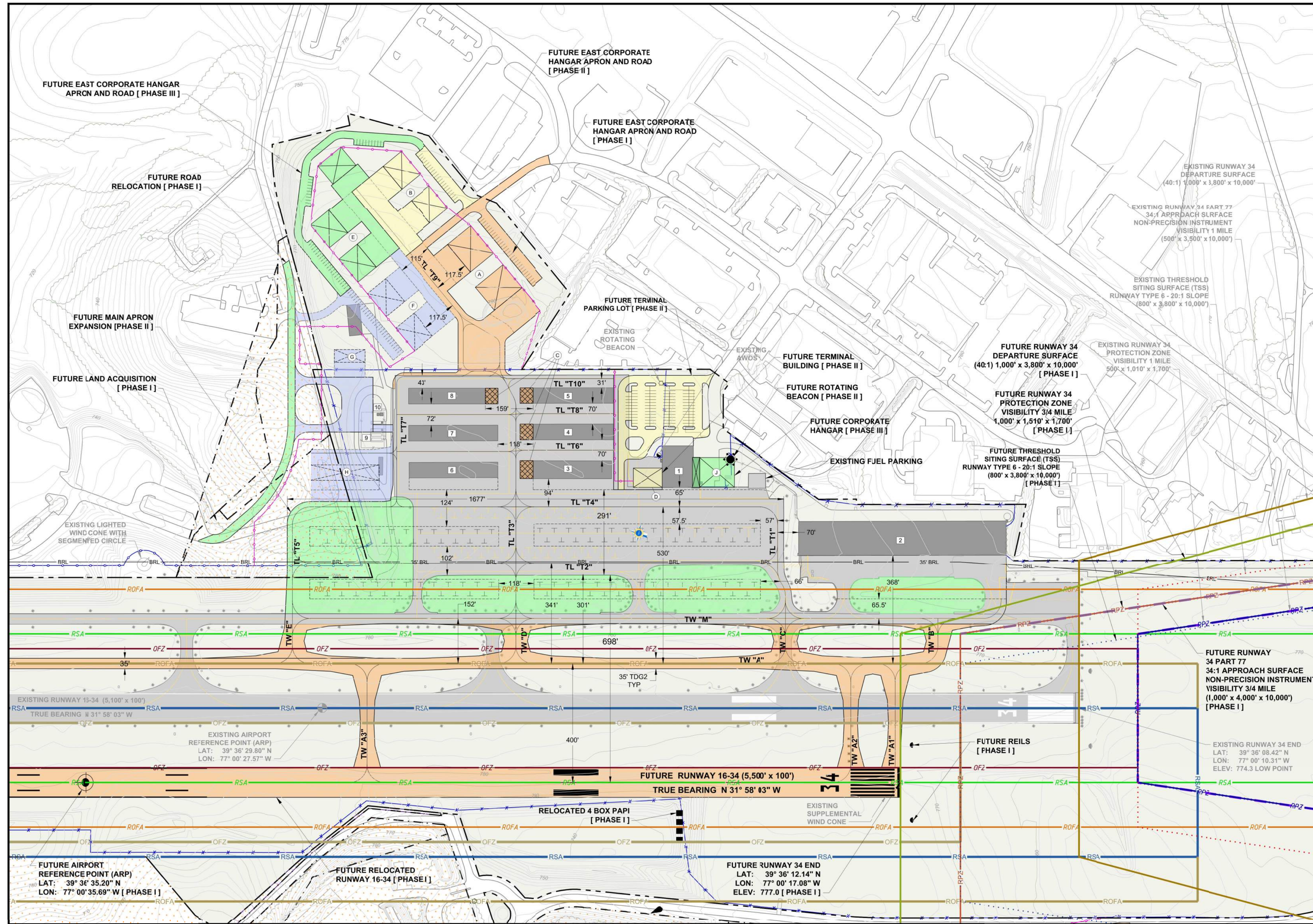
**DELTA AIRPORT CONSULTANTS, INC.**  
www.deltairport.com

DRAWN BY: RWW SCALE: 1" = 400'  
CHECKED BY: RGL DATE: MARCH 2015

SHEET **3** OF **17**

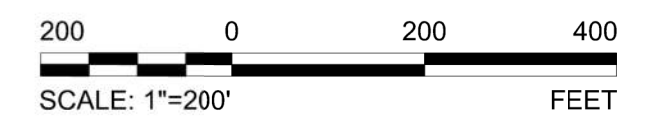
DRAWING: 13053-airp-001 LAYOUT.LT  
DATE: 03/10/2015 10:50:38 AM  
SCALE: 1"=400'





DESCRIPTION	EXISTING	FUTURE	ULTIMATE
AIRPORT BUILDINGS	[Symbol]	[Symbol]	[Symbol]
AIRPORT PROPERTY	[Symbol]	[Symbol]	NA
AVIGATIONAL EASEMENTS	[Symbol]	[Symbol]	NA
DEMOLITION	NA	[Symbol]	NA
PAVEMENT	[Symbol]	[Symbol]	NA
RUNWAY CENTERLINE	[Symbol]	[Symbol]	NA
TAXIWAY/TAXILANE MARKING	[Symbol]	[Symbol]	NA
BUILDING RESTRICTION LINE (BRL)	[Symbol]	[Symbol]	NA
FENCE	[Symbol]	[Symbol]	NA
FENCE (PERIMETER)	[Symbol]	[Symbol]	NA
GROUND ELEVATION CONTOURS	[Symbol]	NA	NA
OBSTACLE FREE ZONE (OFZ)	[Symbol]	[Symbol]	NA
PART 77 APPROACH SURFACE	[Symbol]	[Symbol]	NA
PRECISION OBSTACLE FREE ZONE (POFZ)	NA	[Symbol]	NA
RUNWAY DEPARTURE SURFACE	[Symbol]	[Symbol]	NA
RUNWAY OBJECT FREE AREA (ROFA)	[Symbol]	[Symbol]	NA
RUNWAY PROTECTION ZONE (RPZ)	[Symbol]	[Symbol]	NA
RUNWAY SAFETY AREA (RSA)	[Symbol]	[Symbol]	NA
STREAM	[Symbol]	NA	NA
TAXIWAY OBJECT FREE AREA (TOFA)	[Symbol]	[Symbol]	NA
TAXIWAY SAFETY AREA (TSA)	[Symbol]	[Symbol]	NA
THRESHOLD SITING SURFACE (TSS)	[Symbol]	[Symbol]	NA
TREE LINE	[Symbol]	NA	NA
AIRPORT REFERENCE POINT (ARP)	[Symbol]	[Symbol]	NA
AUTOMATED WEATHER OBSERVING SYSTEM (AWOS)	[Symbol]	[Symbol]	NA
ROTATING BEACON	[Symbol]	[Symbol]	NA
VISUAL APPROACH SLOPE INDICATOR (PAPI)	[Symbol]	[Symbol]	NA
WIND CONE	[Symbol]	NA	NA
WIND CONE WITH SEGMENTED CIRCLE	[Symbol]	NA	NA

DEVELOPMENT PROGRAM	
PHASE I DEVELOPMENT	[I]
PHASE II DEVELOPMENT	[II]
PHASE III DEVELOPMENT	[III]
ULTIMATE DEVELOPMENT	[U]



FACILITIES TABLE				
EXISTING		FUTURE		
REF	FACILITY NAME	TOP ELEV	REF	FACILITY NAME
1	ADMINISTRATION BUILDING/ FBO	810	A	CORPORATE HANGARS [I]
2	CORPORATE HANGARS (7 UNITS)	808	B	BOX HANGARS [II]
3	T-HANGARS (14 UNITS)	806	C	T-HANGARS DEMOLITION [I]
4	T-HANGARS (14 UNITS)	804	D	TERMINAL BUILDING [II]
5	T-HANGARS (14 UNITS)	801	E	BOX HANGARS [III]
6	T-HANGARS (14 UNITS)	804	F	BOX HANGARS [ULT]
7	T-HANGARS (14 UNITS)	803	G	RELOCATED MAINTENANCE EQUIPMENT STORAGE (MES) BUILDING [ULT]
8	T-HANGARS (14 UNITS)	802	H	T-HANGARS [ULT]
9	FUEL FARM	790	I	CORPORATE HANGARS [ULT]
10	CIVIL AIR CONTROL BUILDING	800	J	CORPORATE HANGARS [III]
11	AIRPORT OPERATIONS CENTER	800		

- NOTES**
- THERE ARE NO KNOWN OBSTACLE FREE ZONE (OFZ) OBJECTS THAT ARE PENETRATIONS.
  - THERE ARE NO KNOWN THRESHOLD SITING SURFACE (TSS) PENETRATIONS.
  - FUTURE DEVELOPMENT IS TO SUPPORT ACCESS AND CIRCULATION BY ARC GROUP II AIRCRAFT THROUGHOUT THE TERMINAL AREA.
  - ALL ELEVATIONS ARE IN FEET ABOVE MEAN SEA LEVEL (MSL).
  - ALL ELEVATIONS ARE IN ACCORDANCE WITH NATIONAL MAP ACCURACY STANDARDS. SPOT ELEVATIONS AND GROUND CONTOURS ARE DERIVED FROM AERIAL PHOTOGRAMMETRY AND ARE APPROXIMATE. GROUND SURVEYS ARE RECOMMENDED TO VERIFY ACCURACY.
  - ALL LATITUDE AND LONGITUDE COORDINATES ARE NAD 83/ NAVD 88.
  - TOPOGRAPHY AND PLANIMETRICS FROM AERIAL SURVEYS OBTAINED FROM WOOLPERT, INC., SURVEY DATE: JANUARY 10, 2014.
  - LEGEND ELEMENTS REPRESENT DEPICTIONS ON DRAWING BUT MAY VARY IN SIZE DUE TO SCALING ON DRAWING.

NO.	REVISIONS	BY	APP.	DATE

**TERMINAL AREA PLAN**

**CARROLL COUNTY REGIONAL AIRPORT  
WESTMINSTER, MARYLAND**

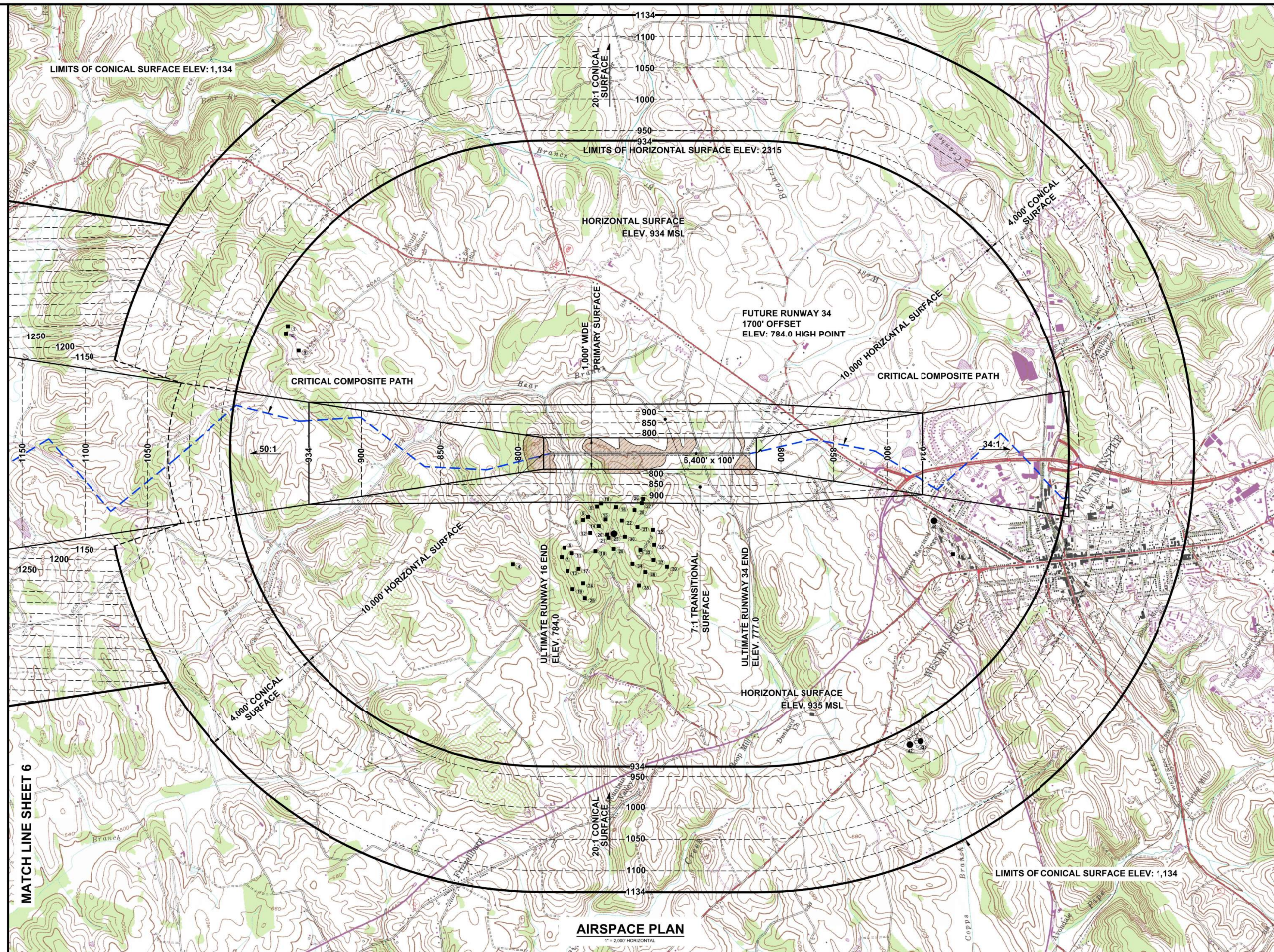
SHEET  
**4**  
OF  
**17**

www.deltairport.com

DRAWN BY: RWW SCALE: 1" = 200'  
CHECKED BY: RGL DATE: MARCH 2015

DRAWING: 13003-1ap.dwg LAYOUT: TERMINAL AREA PLAN  
 DATE: 3/15/2015 10:05:30 AM  
 PROJECT: 13003-1ap.dwg  
 USER: rgl  
 PLOT: 3/15/2015 10:05:30 AM  
 PLOTTER: HP DesignJet T1100e





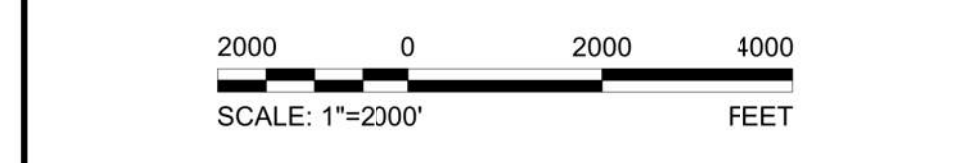
MAGNETIC DECLINATION  
11° 1' 46" W (2014)  
0° 0.7 W/YR

**LEGEND**

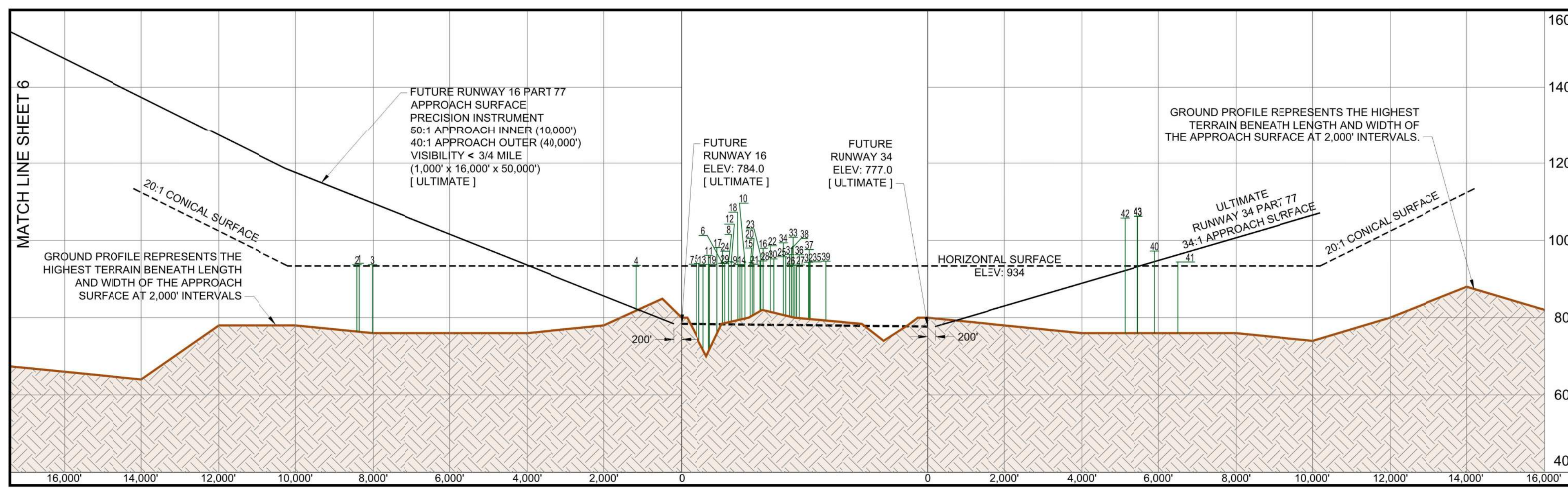
	TOWER/ANTENNA LOCATION (APPROX.)
	OBSTRUCTION
	PART 77 SURFACE (MOST DEMANDING)
	PART 77 SURFACE (NON-DEMANDING)
	PART 77 SURFACE ELEVATIONS
	CRITICAL COMPOSITE PATH
	EXISTING TERRAIN (PROFILE VIEW)
	EXISTING TERRAIN OBSTRUCTION

- NOTES**
- ALL ELEVATIONS ARE IN FEET ABOVE MEAN SEA LEVEL (MSL).
  - THIS EXHIBIT DEPICTS AIRPORT IMAGINARY SURFACES AS DEFINED IN FEDERAL REGULATION 14 CFR PART 77 SECTION 25.
  - PLEASE REFER TO INNER PORTION OF THE APPROACH SURFACE DRAWINGS FOR DETAILS ON ANY CLOSE-IN OBSTRUCTIONS TO THE RUNWAY APPROACH, PRIMARY, AND TRANSITIONAL SURFACES AS WELL AS RUNWAY DATA AND PENETRATIONS TO OTHER CRITICAL SURFACES.
  - ALL OBSTRUCTIONS SHOULD BE EITHER LIGHTED OR REMOVED.
  - CFR TITLE 14, PART 77 REQUIRES THAT A FAA 7460-1 FORM BE SUBMITTED FOR ANY CONSTRUCTION OR ALTERATION WITHIN 20,000 FEET OF THE CLOSEST POINT OF THE RUNWAY WHICH PENETRATES A SLOPE OF 100' (H):1' (V).
  - BASE MAPS TAKEN FROM USGS 7.5 MINUTE SERIES QUADS:
 

USGS MA <sup>2</sup>	DATE
FINKSBURG, MD	1979
LIBERTYTOWN, MD	1993
LITTLESTOWN, MD/PA	1984
MANCHESTER, MD/PA	1971
NEW WINEBOR, MD	1971
TANEYTOWN, MD/PA	1971
UNION BRIDGE, MD	1971
WESTMINSTER, MD	1979
WINFIELD, MD	1979
  - ALL 14 CFR PART 77 SURFACES DEPICTED REPRESENT THE EXISTING DEVELOPMENT PLAN.
  - CARROLL COUNTY ZONING ORDINANCE (§158.054) PROTECTS 14 CFR PART 77 SURFACES SURROUNDING THE AIRPORT FROM COMMUNICATIONS TOWERS WHICH MAY PENETRATE THESE SURFACES.
  - LEGEND ELEMENTS REPRESENT DEPICTIONS ON DRAWING, BUT MAY VARY IN SIZE DUE TO SCALING ON DRAWING.
  - OBSTRUCTION DATA INFORMATION TABLE IS SHOWN ON SHEET 15.



NO.	REVISIONS	BY	APP.	DATE



**ULTIMATE RUNWAY 16 - 34 AIRSPACE PROFILE**  
1"= 2,000' HORIZONTAL / 1"= 200' VERTICAL

**AIRPORT AIRSPACE DRAWING**

**CARROLL COUNTY REGIONAL AIRPORT  
WESTMINSTER, MARYLAND**

**DELTA AIRPORT  
CONSULTANTS, INC.**  
www.deltairport.com

SHEET **5** OF **17**

DRAWN BY: RWW SCALE: H: 1"=2000'; V: 1"=200'  
CHECKED BY: RGL DATE: MARCH 2015

DRAWING: 13083-077-01.dwg LAYOUT: L1  
 DATE: 03/11/2015 9:48:27 AM  
 USER: RGL  
 PLOT: 03/11/2015 9:48:27 AM  
 PLOTTER: HP DesignJet T1100e  
 N:\13083\04 CAD\13083-077.dwg, L1, 4/15/2015 9:48:27 AM, rww



































FUTURE P77 OBSTRUCTION CHART (SEE SHEET 9 & 10)					
NO.	OBJECT DESCRIPTION	TOP ELEV	SURFACE ELEV	SURFACE	MITIGATION
1	TREE	844	838	APPROACH	6 REMOVE
2	TREE	847	836	APPROACH	10 REMOVE
3	TREE	837	827	APPROACH	9 REMOVE
4	TREE	838	837	APPROACH	1 REMOVE
5	TREE	838	827	APPROACH	11 REMOVE
6	TREE	848	838	APPROACH	12 REMOVE
7	TREE	835	824	APPROACH	11 REMOVE
8	TREE	847	835	APPROACH	12 REMOVE
9	TREE	823	816	APPROACH	7 REMOVE
10	TREE	824	820	APPROACH	4 REMOVE
11	TREE	838	833	APPROACH	6 REMOVE
12	TREE	833	824	APPROACH	8 REMOVE
13	TREE	837	836	APPROACH	0 REMOVE
14	TREE	826	821	APPROACH	5 REMOVE
15	TREE	864	833	APPROACH	31 REMOVE
16	TREE	823	816	APPROACH	7 REMOVE
17	TREE	841	813	APPROACH	28 REMOVE
18	TREE	846	834	APPROACH	12 REMOVE
19	TREE	826	823	APPROACH	3 REMOVE
20	TREE	829	819	APPROACH	11 REMOVE
21	TREE	829	816	APPROACH	13 REMOVE
22	TREE	820	820	APPROACH	0 REMOVE
23	TREE	821	819	APPROACH	2 REMOVE
24	TREE	833	817	APPROACH	16 REMOVE
25	TREE	838	813	APPROACH	25 REMOVE
26	TREE	858	821	TRANSITION	37 REMOVE
27	TREE	849	811	APPROACH	38 REMOVE
28	TREE	850	814	APPROACH	35 REMOVE
29	TREE	827	824	APPROACH	4 REMOVE
30	TREE	831	817	APPROACH	14 REMOVE
31	TREE	836	816	APPROACH	20 REMOVE
32	TREE	870	810	TRANSITION	14 REMOVE
33	TREE	844	813	APPROACH	31 REMOVE
34	TREE	861	843	TRANSITION	17 REMOVE
35	TREE	871	831	TRANSITION	40 REMOVE
36	TREE	850	811	APPROACH	38 REMOVE
37	TREE	842	810	APPROACH	32 REMOVE
38	TREE	848	814	APPROACH	34 REMOVE
39	TREE	822	817	APPROACH	5 REMOVE
40	TREE	825	823	APPROACH	2 REMOVE
41	TREE	838	815	APPROACH	23 REMOVE
42	TREE	870	807	APPROACH	62 REMOVE
43	TREE	852	809	APPROACH	42 REMOVE
44	TREE	872	837	TRANSITION	35 REMOVE
45	TREE	857	811	APPROACH	46 REMOVE
46	TREE	818	817	APPROACH	1 REMOVE
47	TREE	870	814	TRANSITION	56 REMOVE
48	TREE	829	819	APPROACH	9 REMOVE
49	TREE	838	820	APPROACH	17 REMOVE
50	TREE	874	841	TRANSITION	33 REMOVE
51	TREE	813	807	APPROACH	6 REMOVE
52	TREE	829	813	APPROACH	15 REMOVE
53	TREE	820	820	APPROACH	0 REMOVE
54	TREE	847	812	APPROACH	36 REMOVE
55	TREE	871	859	TRANSITION	12 REMOVE
56	TREE	840	814	APPROACH	27 REMOVE
57	BUSH	804	803	APPROACH	1 REMOVE
58	TREE	826	822	APPROACH	4 REMOVE
59	TREE	825	817	APPROACH	8 REMOVE
60	TREE	842	815	APPROACH	2 REMOVE
61	TREE	861	841	TRANSITION	21 REMOVE
62	BUSH	810	804	APPROACH	7 REMOVE
63	TREE	856	811	APPROACH	46 REMOVE
64	TREE	837	807	APPROACH	31 REMOVE
65	TREE	835	835	TRANSITION	0 REMOVE
66	TREE	845	808	TRANSITION	37 REMOVE
67	TREE	844	809	APPROACH	36 REMOVE
68	TREE	828	816	APPROACH	11 REMOVE
69	NATURAL HIGH POINT	818	803	APPROACH	15 REMOVE
70	TREE	833	814	APPROACH	19 REMOVE
71	TREE	850	812	APPROACH	38 REMOVE
72	TREE	857	801	APPROACH	57 REMOVE
73	TREE	854	810	APPROACH	44 REMOVE
74	TREE	857	804	APPROACH	53 REMOVE
75	TREE	839	812	APPROACH	28 REMOVE
76	TREE	871	807	APPROACH	64 REMOVE
77	TREE	858	800	APPROACH	58 REMOVE
78	NATURAL HIGH POINT	832	801	APPROACH	31 REMOVE
79	TREE	857	810	APPROACH	48 REMOVE
80	TREE	832	812	APPROACH	20 REMOVE
81	TREE	856	798	APPROACH	58 REMOVE
82	TREE	846	808	APPROACH	38 REMOVE
83	TREE	818	813	APPROACH	6 REMOVE
84	NATURAL HIGH POINT	815	803	APPROACH	11 REMOVE
85	NATURAL HIGH POINT	834	798	APPROACH	36 REMOVE
86	FENCE	837	802	TRANSITION	35 RELOCATE
87	TREE	819	802	APPROACH	17 REMOVE
88	TREE	855	809	APPROACH	46 REMOVE
89	TREE	846	808	APPROACH	38 REMOVE
90	NATURAL HIGH POINT	846	800	APPROACH	47 REMOVE
91	TREE	851	805	APPROACH	46 REMOVE
92	TREE	840	809	APPROACH	31 REMOVE
93	TREE	816	794	APPROACH	22 REMOVE
94	NATURAL HIGH POINT	818	795	APPROACH	22 REMOVE
95	TREE	864	807	APPROACH	56 REMOVE
96	FENCE	845	800	APPROACH	45 RELOCATE
97	TREE	807	802	TRANSITION	5 REMOVE
98	NATURAL HIGH POINT	845	797	APPROACH	48 REMOVE
99	NATURAL HIGH POINT	831	801	APPROACH	30 REMOVE
100	TREE	868	804	APPROACH	65 REMOVE
101	TREE	877	805	APPROACH	72 REMOVE
102	NATURAL HIGH POINT	850	798	APPROACH	52 REMOVE
103	NATURAL HIGH POINT	806	793	APPROACH	13 REMOVE
104	TREE	828	807	APPROACH	21 REMOVE
105	TREE	850	805	APPROACH	44 REMOVE
106	NATURAL HIGH POINT	827	794	APPROACH	33 REMOVE
107	FENCE	843	799	APPROACH	44 RELOCATE
108	TREE	877	803	APPROACH	74 REMOVE
109	TREE	833	820	TRANSITION	13 REMOVE
110	NATURAL HIGH POINT	812	793	APPROACH	19 REMOVE
111	TREE	888	800	APPROACH	88 REMOVE
112	TREE	858	803	APPROACH	54 REMOVE
113	NATURAL HIGH POINT	847	796	APPROACH	51 REMOVE
114	NATURAL HIGH POINT	827	793	APPROACH	34 REMOVE
115	TREE	876	800	APPROACH	76 REMOVE
116	NATURAL HIGH POINT	811	792	APPROACH	19 REMOVE
117	TREE	858	803	APPROACH	55 REMOVE

FUTURE P77 OBSTRUCTION CHART (SEE SHEET 9 & 10)					
NO.	OBJECT DESCRIPTION	TOP ELEV	SURFACE ELEV	SURFACE	MITIGATION
118	PRIMARY ROAD	858	797	APPROACH	61 CLOSE AT AIRPORT PROPERTY LINE
119	PRIMARY ROAD	862	796	APPROACH	66 CLOSE AT AIRPORT PROPERTY LINE
120	TREE	885	801	APPROACH	84 REMOVE
121	TREE	800	787	APPROACH	12 REMOVE
122	PRIMARY ROAD	849	798	APPROACH	52 CLOSE AT AIRPORT PROPERTY LINE
123	NATURAL HIGH POINT	825	793	APPROACH	32 REMOVE
124	TREE	809	788	APPROACH	22 REMOVE
125	PRIMARY ROAD	852	794	APPROACH	58 CLOSE AT AIRPORT PROPERTY LINE
126	TREE	881	799	APPROACH	82 REMOVE
127	NATURAL HIGH POINT	843	795	APPROACH	48 REMOVE
128	TREE	861	825	TRANSITION	35 REMOVE
129	TREE	828	789	APPROACH	40 REMOVE
130	TREE	863	812	TRANSITION	52 CLOSE AT AIRPORT PROPERTY LINE
131	PRIMARY ROAD	838	792	APPROACH	46 REMOVE
132	NATURAL HIGH POINT	835	795	APPROACH	39 REMOVE
133	TREE	795	786	APPROACH	9 REMOVE
134	TREE	891	798	APPROACH	63 REMOVE
135	PRIMARY ROAD	824	789	APPROACH	35 CLOSE AT AIRPORT PROPERTY LINE
136	NATURAL HIGH POINT	833	792	APPROACH	41 REMOVE
137	TREE	804	786	APPROACH	19 REMOVE
138	NATURAL HIGH POINT	826	791	APPROACH	35 REMOVE
139	NATURAL HIGH POINT	834	793	APPROACH	41 REMOVE
140	TREE	886	801	TRANSITION	84 REMOVE
141	NATURAL HIGH POINT	823	795	APPROACH	28 REMOVE
142	TREE	849	815	TRANSITION	34 REMOVE
143	NATURAL HIGH POINT	787	786	APPROACH	0 REMOVE
144	TREE	823	819	TRANSITION	4 REMOVE
145	TREE	862	795	APPROACH	67 REMOVE
146	NATURAL HIGH POINT	822	790	APPROACH	32 REMOVE
147	NATURAL HIGH POINT	801	788	APPROACH	13 REMOVE
148	NATURAL HIGH POINT	827	793	APPROACH	34 REMOVE
149	NATURAL HIGH POINT	794	787	APPROACH	8 REMOVE
150	TREE	880	812	TRANSITION	69 REMOVE
151	TREE	805	781	APPROACH	25 REMOVE
152	TREE	848	830	TRANSITION	13 REMOVE
153	TREE	856	843	TRANSITION	12 REMOVE
154	TREE	807	781	APPROACH	27 REMOVE
155	TREE	804	783	APPROACH	22 REMOVE
156	TREE	844	811	TRANSITION	33 REMOVE
157	NATURAL HIGH POINT	821	790	APPROACH	31 REMOVE
158	TREE	871	787	APPROACH	83 REMOVE
159	NATURAL HIGH POINT	822	791	APPROACH	31 REMOVE
160	TREE	835	825	TRANSITION	11 REMOVE
161	TREE	807	777	APPROACH	29 REMOVE
162	NATURAL HIGH POINT	813	802	TRANSITION	11 REMOVE
163	TREE	859	842	TRANSITION	15 REMOVE
164	NATURAL HIGH POINT	816	789	APPROACH	27 REMOVE
165	TREE	865	815	TRANSITION	48 REMOVE
166	TREE	833	784	APPROACH	49 REMOVE
167	TREE	819	786	TRANSITION	33 REMOVE
168	TREE	820	794	TRANSITION	26 REMOVE
169	TREE	787	775	APPROACH	12 REMOVE
170*	TREE	852	838	TRANSITION	14 REMOVE
171	TREE	802	780	APPROACH	22 REMOVE
172	TREE	852	827	TRANSITION	24 REMOVE
173	NATURAL HIGH POINT	812	800	TRANSITION	12 REMOVE
174	TREE	788	781	APPROACH	17 REMOVE
175	NATURAL HIGH POINT	813	787	APPROACH	25 REMOVE
176	TREE	816	782	APPROACH	35 REMOVE
177	NATURAL HIGH POINT	806	786	APPROACH	21 REMOVE
178	NATURAL HIGH POINT	812	791	TRANSITION	21 REMOVE
179	TREE	787	774	PRIMARY	13 REMOVE
180	TREE	804	792	TRANSITION	12 REMOVE
181	NATURAL HIGH POINT	797	784	APPROACH	13 REMOVE
182	TREE	786	774	PRIMARY	12 REMOVE
183	TREE	815	805	TRANSITION	13 REMOVE
184	TREE	793	782	APPROACH	13 REMOVE
185	TREE	787	778	APPROACH	9 REMOVE
186	NATURAL HIGH POINT	804	796	TRANSITION	8 REMOVE
187	TREE	775	774	PRIMARY	1 REMOVE
188	TREE	818	780	APPROACH	38 REMOVE
189	TREE	777	774	PRIMARY	2 REMOVE
190	TREE	800	782	APPROACH	29 REMOVE
191	TREE	831	815	TRANSITION	17 REMOVE
192	TREE	780	774	PRIMARY	5 REMOVE
193	TREE	800	795	TRANSITION	5 REMOVE
194	TREE	834	776	PRIMARY	58 REMOVE
195	TREE	844	776	PRIMARY	67 REMOVE
196	NATURAL HIGH POINT	781	779	PRIMARY	1 REMOVE
197	TREE	816	807	TRANSITION	9 REMOVE
198	TREE	825	821	TRANSITION	4 REMOVE
199	TREE	777	783	PRIMARY	78 REMOVE
200	NATURAL HIGH POINT	784	780	PRIMARY	4 REMOVE
201	TREE	830	777	PRIMARY	53 REMOVE
202	TREE	838	782	TRANSITION	56 REMOVE
203	NATURAL HIGH POINT	782	779	PRIMARY	2 REMOVE
204	TREE	865	777	PRIMARY	89 REMOVE
205	NATURAL HIGH POINT	785	780	PRIMARY	6 REMOVE
206	TREE	827	801	TRANSITION	26 REMOVE
207	NATURAL HIGH POINT	786	780	PRIMARY	6 REMOVE
208	TREE	863	778	PRIMARY	88 REMOVE
209	NATURAL HIGH POINT	785	780	PRIMARY	5 REMOVE
210	TREE	868	793	TRANSITION	74 REMOVE
211	NATURAL HIGH POINT	786	783	TRANSITION	3 REMOVE
212	TREE	876	778	PRIMARY	98 REMOVE
214	TREE	847	778	PRIMARY	68 REMOVE
215	TREE	879	790	TRANSITION	89 REMOVE
217	NATURAL HIGH POINT	786	785	TRANSITION	2 REMOVE
218	NATURAL HIGH POINT	784	782	TRANSITION	2 REMOVE
219	NATURAL HIGH POINT	787	781	PRIMARY	5 REMOVE
220	TREE	853	779	PRIMARY	74 REMOVE
221	TREE	880	778	PRIMARY	101 REMOVE
222	NATURAL HIGH POINT	788	781	PRIMARY	7 REMOVE
223	NATURAL HIGH POINT	781	781	PRIMARY	1 REMOVE
224	TREE	875	795	TRANSITION	80 REMOVE
225	TREE	855	779	PRIMARY	76 REMOVE
226	NATURAL HIGH POINT	800	780	PRIMARY	20 REMOVE
227	NATURAL HIGH POINT	784	782	TRANSITION	2 REMOVE
229	TREE	858	816	TRANSITION	42 REMOVE
230	TREE	888	779	PRIMARY	169 REMOVE
231	TREE	882	780	PRIMARY	162 REMOVE
232	TREE	868	791	TRANSITION	77 REMOVE
233	NATURAL HIGH POINT	782	781	PRIMARY	1 REMOVE
234	NATURAL HIGH POINT	785	782	PRIMARY	3 REMOVE

PURPOSELY OMITTED FROM COUNT: 212, 216, 228

FUTURE P77 OBSTRUCTION CHART (SEE SHEET 9 & 10)					
NO.	OBJECT DESCRIPTION	TOP ELEV	SURFACE ELEV	SURFACE	MITIGATION
235	NATURAL HIGH POINT	784	783	PRIMARY	1 REMOVE
236*	TREE	901	886	TRANSITION	15 REMOVE
237	TREE	817	781	PRIMARY	36 REMOVE
238	TREE	904			

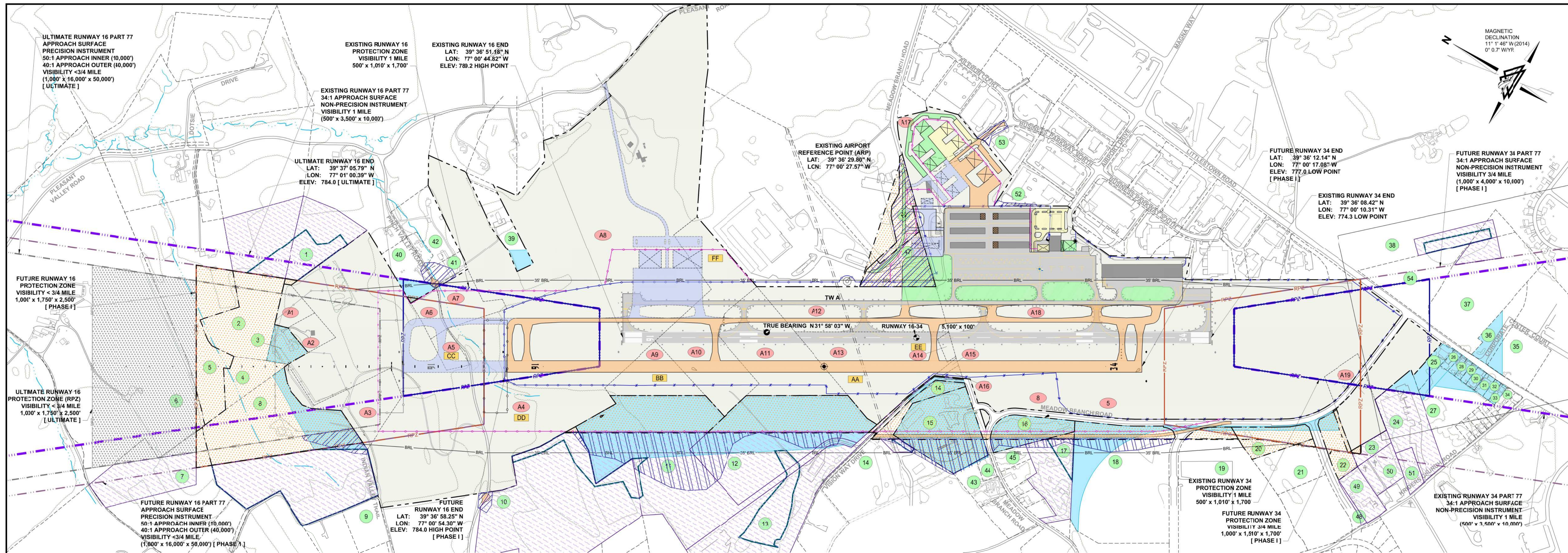












REF #	PREVIOUS AFM PARCEL #	DEED-PLAT BOOK / PAGE	PREVIOUS OWNER(S) / GRANTOR(S)	ACREAGE	DATE OF PURCHASE	GRANT	PURPOSE
A1	33	DB 1777 169	EDWARDS, GARY AND NANCY	1.75	05/28/1993	AP 09	ORIGINAL PURCHASE OF PARCEL
A2	31	DB 1322 282	REDMOND, JOHN W.	1.72	11/01/1993	AP 09	-
A3	30A	DB 1634 908	CARROLL COUNTY COMMISSIONERS	6.12	09/08/1994	AP 09	-
A4	17	DB 1350 472	STARNER, JR. ARTHUR D.	62.82	04/28/1992	AP 08	-
A5	9	DB 1259 437	LITTLE, WALTER W. AND LINDA L.	1.72	12/18/1988	AP 08	-
A6	38	DB 1400 207	STARNER, ROBERT LEE	1.72	10/28/1992	AP 09	-
A7	18	DB 1303 881	STARNER, JR. ARTHUR E.	3.72	10/08/1992	AP 08	-
A8	8	DB 1419 131	BYERS, PAULINE M.	102.44	01/06/1993	AP 09 & 12	-
A9	6B	DB 1283 517	MILLER, CLARA	5.82	07/03/1991	AP 07	-
A10	4	DB 1227 439	MARTIN, ROBERT AND JANET	13.42	08/16/1990	AP 06	-
A11	6A	DB 1283 517	MILLER, CLARA	13.52	07/03/1991	AP 07	-
A12	2	DB 750 559	RANKULL, ELLIS C. AND CATHERINE I.	82.52	09/14/1978	N/A	-
A13	7	DB 1283 514	MILLER, JR. CHARLES J.	14.42	07/01/1991	AP 07	-
A14	3	DB 137 240	BROWER, JOSEPH AND ROS	0.42	06/22/1989	AP 06	-
A15	16C	DB 2153 800	MILLER, CLARA	0.32	01/28/1999	AP 07	OVER FLIGHT & FAR PART 77 (7-1)
A16	16B	DB 2152 579	MILLER, JR. CHARLES	0.22	02/20/1998	AP 07	TRANSITIONAL SURFACE
A17	40	DB 3995 223	WESTMINSTER BUSINESS PARK	13.92	05/24/2004	AP 21	-
A18	1	DB 454 374	B.F. SHIVERS COMPANY, INC.	121.82	08/06/1995	N/A	-
A19	14	DB 1309836 - PB 36161	KRIDERS UNITED CHURCH OF CHRIST	5.52	11/26/1991	AP 09	-

REF #	PREVIOUS AFM PARCEL #	TAX PARCEL ID	DEED BOOK / PAGE	OWNER(S)	ACREAGE
1	-	3074	611623	RICHARDSON, STEPHANIE ANN	33.32
2	-	3020	761053	ABDELMOHAM, MOHAMED	29.52
3	44 / 34	30394	218819	WISNER, THOMAS ROBERT	1.82
4	42	30276	979473	PATTERSON, DONALD M.	2.92
5	-	30482	6808397	LAWLESS, DOUGLAS M.	21.62
6	43	30573	685032	OSBOURN, STEVEN D. & CONNOR KATHLEEN M.	79.22
7	-	30259	38918 8	TANSELL, MARY GIGONE, LAWRENCE ET AL.	79.32
8	30B, 41, & 45	30232	20078 2	CARROLL COUNTY COMMISSIONERS	28.22
9	-	30416	529019	BUCKOWSKI, RONALD D.	3.02
10	-	30101	1419131	CARROLL COUNTY COMMISSIONERS	102.42
11	6C	38976	795503	MILLER, KATHERINE E. (TRUSTEE) TRACT 1-2ND AMENDED PLAT OF LIFE'S DREAM	25.22
12	46	38976	795526	MILLER, KATHERINE E. (TRUSTEE) TRACT 2-2ND AMENDED PLAT OF LIFE'S DREAM	18.82
13	-	38976	76261 6	MILLER, KATHERINE E. (TRUSTEE) TRACT 3-4TH AMENDED PLAT OF LIFE'S DREAM	28.82
14	48 & 15A	38798	7606122	MILLER, KATHERINE E. (TRUSTEE) TRACT 3-4TH AMENDED PLAT OF LIFE'S DREAM	119.82
15	47 & 15A	38797	227540	TRIPLE M, LLC	8.42
16	39	38759	313411	TRIPLE M, LLC, LOT 2 - MEADOW BRANCH ROAD RELOCATION	3.42
17	-	38462	49571 (PB 105)	WETZEL, KENNETH E. & WETZEL FRANCES E.	5.02
18	5 & 38	1146784	313411 & 23416 (PB 4811120)	TRIPLE M, LLC, LOT 3 - MEADOW BRANCH INDUSTRIAL PARK	10.22
19	-	1146784	4024599 (PB 48117120)	DLI LIMITED LIABILITY PARTNERSHIP LOT 3 - MEADOW BRANCH INDUSTRIAL PARK	25.22
20	49	1146784	2367669 & 13416 (PB 4811120)	TRIPLE M, LLC, LOT 4 - MEADOW BRANCH INDUSTRIAL PARK	2.82
21	49	1146784	2367669 & 13416 (PB 4811120)	TRIPLE M, LLC, LOT 5 - MEADOW BRANCH INDUSTRIAL PARK	3.02
22	49	1146784	2367669 & 13416 (PB 4811120)	TRIPLE M, LLC, LOT 1 - MEADOW BRANCH INDUSTRIAL PARK	2.52
23	50	38861	900714	BENJAMIN KRIDERS UNITED CHURCH OF CHRIST	1.12
24	35	38846	14412 5	CARROLL COUNTY COMMISSIONERS	6.02
25	10	38981	189977	FESSER, ETAL, R.E. (COMMERCIAL)	1.22
26	11	38948	498416	SCHUSTER, JOHN J., JR. & DIANE E.	0.32
27	29	38750	424630	JARC OF CARROLL COUNTY, INC.	5.72
28	12	38382	1714586	SULLIVAN, MICHAEL J. & JOLENE G.	0.42
29	23	38909	621527	KINNA, WILLIAM DONALD, JR.	0.22
30	24	38983	253148	FESSER, DORIS V.	0.42
31	25	38194	56671	ECKERD, LISA R.	0.42
32	26	38437	1714581	SULLIVAN, MICHAEL J. & JOLENE G.	0.32
33	27	38934	1713663	WHALEY, KOREEN K.	0.32
34	28	38444	1743880	BAUGHER, NATHAN A.	0.32
35	22	1144988	2405191	CORPORATE CENTER LEASING, LLC	3.92
36	13	38516	2223714	THE MAYOR AND COMMON COUNCIL OF WESTMINSTER	2.42
37	-	1144988	6044237	R&E I, LLC	12.72
38	-	38932	6146435	BISH, CARROLL F. (TRUSTEE)	89.82
39	37	34130	1701365	SHILTS, WENDALL J. & LAURIE REBECCA	3.52
40	32	30501	2002458	BANKERT, SAMUEL O., BANKERT, ETHEL M., ET AL.	3.12
41	-	3500	6351294	BANKERT, RAYMOND I. & PATRICIA	1.42
42	-	30499	6351294	BANKERT, RAYMOND I. & PATRICIA	6.12
43	-	38449	4013123	MICHTRE, LATRICE & LAPOLLETTE, HOLLY	1.92
44	-	38977	6470389	TU, YUN SANG	0.52
45	-	38462	3805397	EVANS, DAVID PAUL	1.02
46	-	3036	1395971	CARROLL COUNTY COMMISSIONERS	83.12
47	-	38600	75059	CARROLL COUNTY COMMISSIONERS	52.22
48	-	1146784	3529843	JACOBS RIDGE, LLC	0.22
49	-	38460	748842	EMMERT, DAVID G.	2.02
50	-	38817	70511	BENJAMIN REFORMED CHURCH OF CARROLL COUNTY	3.22
51	-	38846	938396	CARROLL COUNTY ASSOCIATION FOR RETIRED CITIZENS, INC.	6.02
52	-	1138883	1310392	HULL, STEVEN G. (TRUSTEE)	3.32
53	-	1138885	4487282	SKYWATER WESTMINSTER, LLC	2.52
54	-	1144988	6131	CARROLL COUNTY ASSOCIATION FOR RETIRED CITIZENS, INC.	8.52

REF #	OWNER(S)	ACREAGE	PURPOSE
1	RICHARDSON, STEPHANIE ANN	0.12	FUTURE RUNWAY PROTECTION ZONE, OBSTRUCTION REMOVAL
2	ABDELMOHAM, MOHAMED	1.72	FUTURE RUNWAY PROTECTION ZONE, OBSTRUCTION REMOVAL
3	WISNER, THOMAS ROBERT	1.82	FUTURE RUNWAY PROTECTION ZONE
4	PATTERSON, DONALD M.	2.92	FUTURE RUNWAY PROTECTION ZONE
5	LAWLESS, DOUGLAS M.	11.12	FUTURE RUNWAY PROTECTION ZONE
6	OSBOURN, STEVEN D. & CONNOR KATHLEEN M.	28.32	FUTURE RUNWAY PROTECTION ZONE
7	TANSELL, MARY GIGONE, LAWRENCE ET AL.	2.22	FUTURE RUNWAY PROTECTION ZONE, OBSTRUCTION REMOVAL
8	CARROLL COUNTY COMMISSIONERS	13.82	FUTURE RUNWAY PROTECTION ZONE, OBSTRUCTION REMOVAL
9	CARROLL COUNTY COMMISSIONERS	0.12	FUTURE AIRPORT DEVELOPMENT
10	BUCKOWSKI, RONALD D.	7.52	FUTURE AIRPORT DEVELOPMENT
11	MILLER, KATHERINE E. (TRUSTEE) TRACT 1-2ND AMENDED PLAT OF LIFE'S DREAM	8.82	PRIMARY SURFACE, FUTURE AIRPORT DEVELOPMENT
12	MILLER, KATHERINE E. (TRUSTEE) TRACT 2-2ND AMENDED PLAT OF LIFE'S DREAM	0.32	PRIMARY SURFACE, FUTURE AIRPORT DEVELOPMENT, OBSTRUCTION REMOVAL
13	MILLER, KATHERINE E. (TRUSTEE) TRACT 3-4TH AMENDED PLAT OF LIFE'S DREAM	1.72	PRIMARY SURFACE, FUTURE AIRPORT DEVELOPMENT, OBSTRUCTION REMOVAL
14	MILLER, KATHERINE E. (TRUSTEE) TRACT 3-4TH AMENDED PLAT OF LIFE'S DREAM	8.42	PRIMARY SURFACE, FUTURE AIRPORT DEVELOPMENT, OBSTRUCTION REMOVAL
15	TRIPLE M, LLC	3.42	PRIMARY SURFACE, FUTURE AIRPORT DEVELOPMENT, OBSTRUCTION REMOVAL
16	TRIPLE M, LLC, LOT 2 - MEADOW BRANCH ROAD RELOCATION	0.22	PRIMARY SURFACE, FUTURE AIRPORT DEVELOPMENT, OBSTRUCTION REMOVAL
17	WETZEL, KENNETH E. & WETZEL FRANCES E.	2.42	PRIMARY SURFACE, FUTURE AIRPORT DEVELOPMENT
18	TRIPLE M, LLC, LOT 3 - MEADOW BRANCH INDUSTRIAL PARK	0.82	PRIMARY SURFACE, FUTURE AIRPORT DEVELOPMENT
19	DLI LIMITED LIABILITY PARTNERSHIP LOT 3 - MEADOW BRANCH INDUSTRIAL PARK	2.92	FUTURE RUNWAY PROTECTION ZONE
20	TRIPLE M, LLC, LOT 4 - MEADOW BRANCH INDUSTRIAL PARK	0.12	FUTURE RUNWAY PROTECTION ZONE
21	TRIPLE M, LLC, LOT 1 - MEADOW BRANCH INDUSTRIAL PARK	2.52	FUTURE RUNWAY PROTECTION ZONE
22	TRIPLE M, LLC, LOT 5 - MEADOW BRANCH INDUSTRIAL PARK	0.12	FUTURE RUNWAY PROTECTION ZONE, OBSTRUCTION REMOVAL
23	BENJAMIN KRIDERS UNITED CHURCH OF CHRIST	0.12	FUTURE RUNWAY PROTECTION ZONE, OBSTRUCTION REMOVAL
24	BANKERT, SAMUEL O.	0.12	FUTURE RUNWAY PROTECTION ZONE
46	CARROLL COUNTY COMMISSIONERS	4.12	PRIMARY SURFACE, FUTURE AIRPORT DEVELOPMENT

REF #	PREVIOUS AFM PARCEL #	OWNER(S)	DATE OF RELEASE	REMARK(S)
3	34	WISNER, THOMAS & MELANIE	08/09/1995	RELEASE OF PARCEL 34
16	39	TRIPLE M, LLC / PARCEL 39	11/14/2002	RELEASE OF PARCEL 16
18	38	TRIPLE M, LLC / LOT 2	11/14/2002	RELEASE OF PARCEL 5
28	12	SULLIVAN, MICHAEL & JOLENE	08/04/1995	RELEASE OF PARCEL 12
29	23	KINNA, WILLIAM & SHARON	07/17/1995	RELEASE OF PARCEL 23
32	26	SULLIVAN, MICHAEL & JOLENE	08/04/1995	RELEASE OF PARCEL 26
33	27	WHALEY, KOREEN	08/01/1995	RELEASE OF PARCEL 27
34	28	BAUGHER, NATHAN	10/18/1995	RELEASE OF PARCEL 28
37	-	CORPORATE CENTER LEASING LLC	UNKNOWN	RELEASE PROPERTY

REF #	PREVIOUS REF #	TAX PARCEL ID	OWNER(S)	ACREAGE	PURPOSE
9	44 / 34	30394	WISNER, THOMAS & MELANIE	1.82	RUNWAY PROTECTION ZONE
11	6C	38976	MILLER, JR. CHARLES J., TRACT 1-2ND AMENDED PLAT OF LIFE'S DREAM	13.62	RUNWAY PROTECTION ZONE
12	46	38976	MILLER, JR. CHARLES J., TRACT 2-2ND AMENDED PLAT OF LIFE'S DREAM	13.32	RUNWAY PROTECTION ZONE
13	-	38976	MILLER, JR. CHARLES J., TRACT 3-4TH AMENDED PLAT OF LIFE'S DREAM	0.12	RUNWAY PROTECTION ZONE
14	48 & 15A	38798	MILLER, JR. CHARLES J., TRACT 3-4TH AMENDED PLAT OF LIFE'S DREAM	1.42	RUNWAY PROTECTION ZONE
15	47 & 15A	38797	TRIPLE M, LLC	8.52	RUNWAY PROTECTION ZONE
16	39	38759	TRIPLE M, LLC / PARCEL 39 - PLAT OF MEADOW BRANCH RD RELOCATION	3.42	RUNWAY PROTECTION ZONE
18	5 & 38	1146784	TRIPLE M, LLC / LOT 3 - MEADOW BRANCH INDUSTRIAL PARK	5.22	RUNWAY PROTECTION ZONE
19	-	1146784	DLI LIMITED LIABILITY PARTNERSHIP / LOT 3 - MEADOW BRANCH IND. PARK	0.22	RUNWAY PROTECTION ZONE
20	49	1146784	TRIPLE M, LLC / LOT 4 - MEADOW BRANCH INDUSTRIAL PARK	0.52	RUNWAY PROTECTION ZONE
22	49	1146784	TRIPLE M, LLC / LOT 1 - MEADOW BRANCH INDUSTRIAL PARK	0.52	RUNWAY PROTECTION ZONE
24	35	38846	CGRC - CARROLL COUNTY ASSOC. FOR RETIRED CITIZENS, INC.	0.72	RUNWAY PROTECTION ZONE
25	10	38981	FESSER, ETAL, R.E. (COMMERCIAL)	1.22	RUNWAY PROTECTION ZONE
26	11	38948	WHALEY, KOREEN	0.32	RUNWAY PROTECTION ZONE
27	29	38934	NEWLIFE FOR GIRLS, INC.	0.52	RUNWAY PROTECTION ZONE
28	12	38382	SULLIVAN, MICHAEL J. & JOLENE	0.32	RUNWAY PROTECTION ZONE
29	23	38909	KINNA, WILLIAM & SHARON	0.32	RUNWAY PROTECTION ZONE
30	24	38983	FESSER, R. F.	0.32	RUNWAY PROTECTION ZONE
31	25	38194	ECKERD, LISA R.	0.42	RUNWAY PROTECTION ZONE
32	26	38437	SULLIVAN, MICHAEL J. & JOLENE	0.42	RUNWAY PROTECTION ZONE
33	27	38934	WHALEY, KOREEN	0.32	RUNWAY PROTECTION ZONE
34	28	38444	BAUGHER, NATHAN	0.32	RUNWAY PROTECTION ZONE
35	22	1144988	NATIONAL INSTRUMENT COMPANY	0.52	RUNWAY PROTECTION ZONE
36	13	38516	THE MAYOR AND COMMON COUNCIL OF WESTMINSTER	1.42	RUNWAY PROTECTION ZONE
39	37	34130	SHILTS, DAVID & TINA	0.32	RUNWAY PROTECTION ZONE
40	32	30501	BANKERT, SAMUEL O. & ETHEL	0.32	RUNWAY PROTECTION ZONE

REF #	OWNER(S)	ACREAGE	PURPOSE
1	RICHARDSON, STEPHANIE ANN	0.02	OBSTRUCTION REMOVAL
2	ABDELMOHAM, MOHAMED	7.72	OBSTRUCTION REMOVAL
7	TANSELL, MARY GIGONE, LAWRENCE ET AL.	3.32	OBSTRUCTION REMOVAL
8	CARROLL COUNTY COMMISSIONERS	14.32	OBSTRUCTION REMOVAL
9	CARROLL COUNTY COMMISSIONERS	25.62	OBSTRUCTION REMOVAL
10	MILLER, KATHERINE E. (TRUSTEE) TRACT 1-2ND AMENDED PLAT OF LIFE'S DREAM	11.62	OBSTRUCTION REMOVAL
11	MILLER, KATHERINE E. (TRUSTEE) TRACT 2-2ND AMENDED PLAT OF LIFE'S DREAM	5.42	OBSTRUCTION REMOVAL
12	MILLER, KATHERINE E. (TRUSTEE) TRACT 3-4TH AMENDED PLAT OF LIFE'S DREAM	15.82	OBSTRUCTION REMOVAL
13	MILLER, KATHERINE E. (TRUSTEE) TRACT 3-4TH AMENDED PLAT OF LIFE'S DREAM	0.52	OBSTRUCTION REMOVAL
14	MILLER, KATHERINE E. (TRUSTEE) TRACT 3-4TH AMENDED PLAT OF LIFE'S DREAM	0.52	OBSTRUCTION REMOVAL
15	TRIPLE M, LLC	3.42	OBSTRUCTION REMOVAL
16	TRIPLE M, LLC, LOT 2 - MEADOW BRANCH ROAD RELOCATION	0.22	OBSTRUCTION REMOVAL
17	WETZEL, KENNETH E. & WETZEL FRANCES E.	4.92	OBSTRUCTION REMOVAL
18	TRIPLE M, LLC, LOT 3 - MEADOW BRANCH INDUSTRIAL PARK	1.02	OBSTRUCTION REMOVAL
19	DLI LIMITED LIABILITY PARTNERSHIP LOT 3 - MEADOW BRANCH INDUSTRIAL PARK	5.22	OBSTRUCTION REMOVAL
20	TRIPLE M, LLC, LOT 4 - MEADOW BRANCH INDUSTRIAL PARK	5.62	OBSTRUCTION REMOVAL
21	TRIPLE M, LLC, LOT 1 - MEADOW BRANCH INDUSTRIAL PARK	2.02	OBSTRUCTION REMOVAL
22	TRIPLE M, LLC, LOT 5 - MEADOW BRANCH INDUSTRIAL PARK	0.22	OBSTRUCTION REMOVAL
23	BENJAMIN KRIDERS UNITED CHURCH OF CHRIST	0.22	OBSTRUCTION REMOVAL
24	CARROLL COUNTY COMMISSIONERS	4.12	OBSTRUCTION REMOVAL
25	R&E I, LLC	1.32	OBSTRUCTION REMOVAL
26	BISH, CARROLL F. (TRUSTEE)	2.52	OBSTRUCTION REMOVAL
27	SHIL		