

# FINKSBURG BICYCLE AND PEDESTRIAN PLANNING FEASIBILITY STUDY

---

December 4, 2024  
Open House #1



# Welcome!

---

- We invite you to learn more about this study,
- Ask questions,
- Provide your input on what walking and biking enhancements you think are needed to improve connections and accessibility in the study area.



# Project History and Support

---

- This study is funded by **The Transportation & Land Use Connections (TLC) Grant Program** through the Baltimore Metropolitan Council and the Baltimore Regional Transportation Board.
- The TLC program provides short-term technical assistance to support local governments in their planning and preliminary design efforts to implement changes to the built environment that reduce traffic on roads and enable more people to easily walk, bike, and use transit.
- Carroll County applied for, and was awarded, a 2024 TLC grant which provided planning funds to support this study to assess the feasibility of a pedestrian and bicycle network in the Finksburg Sustainable Growth Area.



# Project Overview

---

- Purpose of the project
- Study area
- Project schedule
- Steps in the planning process



# Project Purpose

---

- In collaboration with the community, this plan will identify safe and accessible pedestrian and bicycle infrastructure locations and routes, connect residential areas with local destinations and businesses, stimulate community revitalization and economic development, and foster health, well-being, and social connectivity.
- Assess the feasibility of implementing a connected, balanced, and safe non-motorized network in the Finksburg Sustainable Growth Area.
- Enhance the quality of life for those who live, work and play in and around Finksburg.
- Position Finksburg and the County to advocate for infrastructure design, funding and implementation to help foster future growth.
- The study outcome will serve as a guiding document that will assist in updating the Finksburg Corridor Plan, County Master Plan and Countywide Bike/Pedestrian Master Plan.



# Study Area

---

- The study area for this project is the Finksburg Sustainable Community Area boundary (shown to the right)



# Planning Step 1: Project Schedule and Coordination

---

- **Core Project Team:**  
Carroll County, Baltimore Metropolitan Council, Toole Design
- **Project Schedule:** August 2024 – March 2025
- **Ongoing Engagement:** with community members, steering committee and partner agencies at key project points



# Planning Step 2: Understand Existing Conditions and Previous Plans

---

- Data collection and GIS mapping analysis
- Review existing and planned facilities
- Summarize existing plans and resources





# Planning Step 3: Community Engagement

---

- Occurs throughout the planning process to ensure feedback is incorporated throughout.
- 3 Steering Committee Meetings
- 2 Community Meetings



# Planning Step 4: Network Vision and Development

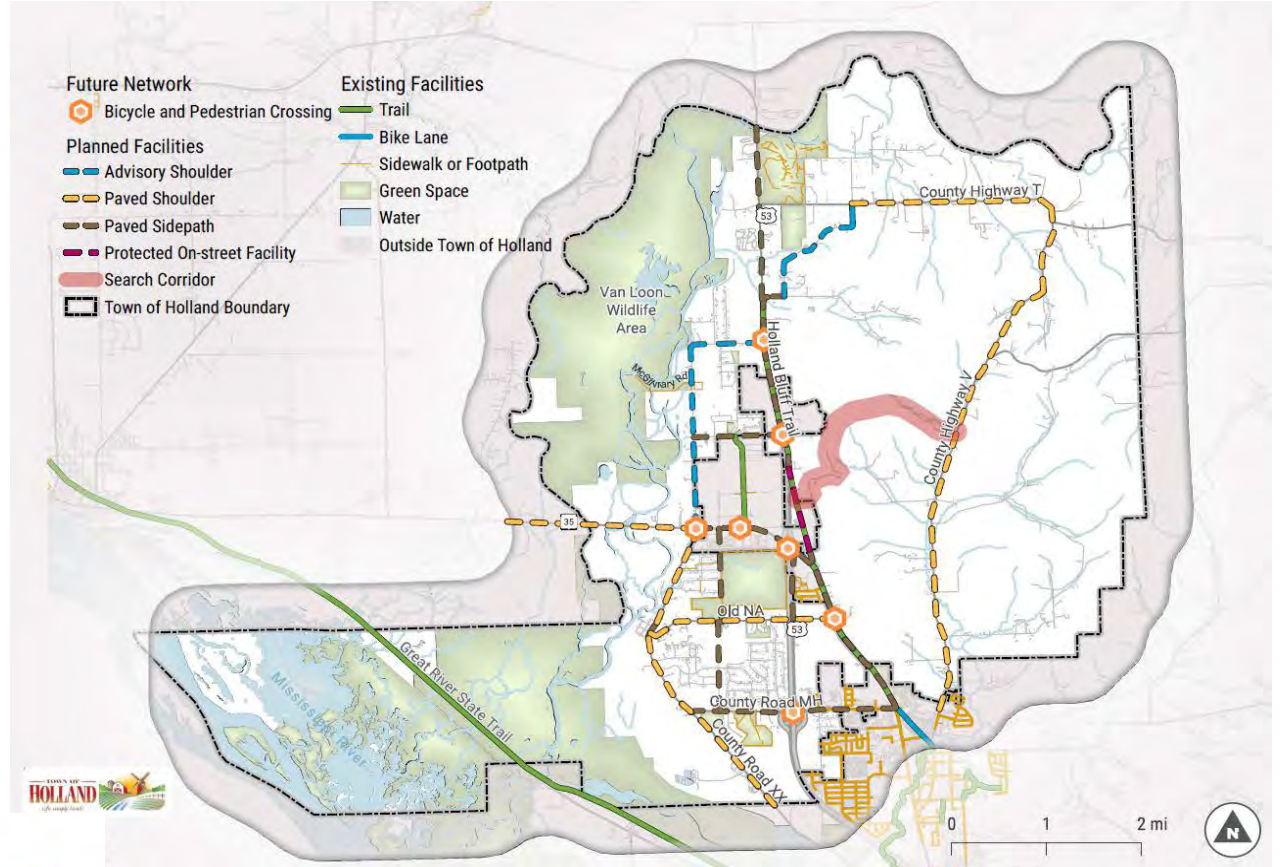
---

- Network Vision
- Methodology for Network Development
- Develop and Evaluate Ped & Bike Networks
- Draft and Final Bicycle Network Recommendations
- Draft and Final Pedestrian Network Recommendations



# Planning Step 5: Ranking of Priority Projects

- Identify criteria for ranking priority projects
- Projects will be mapped and grouped by implementation phasing.



# Planning Step 5: Implementation Strategy

- High-level implementation strategy for proposed projects
- Spreadsheet with planning level and feasibility details.

Project ID	Roadway/ Trail Name	Project Extents	Length (mi.)	Complete Streets Project Type	Lead Agency (Partner/s)	Phasing*	Opportunity Project - Type	Opportunity Project - Year	Opportunities and Challenges
1	184th Street	North City Limits to Meredith Drive	1.75	Separated Bicycle Lanes	City of Urbandale	Long Term			Facility can be added when road is altered from a rural to suburban cross section. Preferable facility type is a 10' asphalt pair of bike lanes on one side of the street at sidewalk level adjacent to a 5' concrete sidewalk.
2	Meadow Drive	West City Limits to East City Limits	1	Separated Bicycle Lanes	City of Urbandale	Long Term			Facility can be added when road is altered from a rural to suburban cross section. Preferable facility type is a 10' asphalt pair of bike lanes on one side of the street at sidewalk level adjacent to a 5' concrete sidewalk.
3a	Walnut Creek Trail	Western City Limits to 156th Street	2.1	Greenway Trail	City of Urbandale	Long Term			Greenway trail can be constructed as residential development progresses.
3b	Walnut Creek Trail	Walnut Creek Trail to Waterford Road	0.5	Greenway Trail	City of Urbandale	Short Term	CIP (PK15-02)	2021	
4a	170th Street	Northern City Limits to Waterford Road	0.3	Separated Bicycle Lanes	City of Urbandale	Medium Term			Facility can be added when road is altered from a rural to suburban cross section. Preferable facility type is a 10' asphalt pair of bike lanes on one side of the street at sidewalk level adjacent to a 5' concrete sidewalk.
4b	170th Street	Waterford Road to Meredith Drive	1	Separated Bicycle Lanes	City of Urbandale	Short Term	CIP (ST16-03)	2021	Facility can be added when road is altered from a rural to suburban cross section. Preferable facility type is a 10' asphalt pair of bike lanes on the west side of the street at sidewalk level adjacent to a 5' concrete sidewalk.
5a	Meredith Drive	184th Street to NW 167th Street	1	Separated Bicycle Lanes	City of Urbandale	Medium Term	CIP (ST06-05)	2024-28	Facility can be added when road is altered from a rural to suburban cross section. Preferable facility type is a 10' asphalt pair of bike lanes on the west side of the street at sidewalk level adjacent to a 5' concrete sidewalk.



# Stay Involved! Next Steps...

---

- Steering Committee Meeting #2 – December 2024
- Community Meeting #2 (virtual) – Early 2025
  - Purpose: To share out and receive community feedback on draft vision and pedestrian and bicycle network; to help identify criteria for prioritizing projects.



# For Additional Project Information

---

- **Web page:** visit [www.carrollcountymd.gov](http://www.carrollcountymd.gov)
- **QR code:** scan to access the project webpage for updates
- **Call:** Carroll County Bureau of Comprehensive Planning, 410-386-5145
- **Email:** contact the project team

Tiffany Fossett, Planner I, Carroll County  
[tfossett@carrollcountymd.gov](mailto:tfossett@carrollcountymd.gov)

Kelly Peterson, Planning Manager, Toole Design  
[kpeterson@tooledesign.com](mailto:kpeterson@tooledesign.com)

**TOOLE**  
DESIGN



---

**BALTIMORE**  
**METROPOLITAN**  
**COUNCIL**

