

# Carroll County Water Resource Coordination Council

Hampstead \* Manchester \* Mt. Airy \* New Windsor  
Carroll County Health Department



\* Sykesville \* Taneytown \* Union Bridge \* Westminster  
Carroll County Government

## WRCC Meeting Summary November 15, 2023

### Attendees:

#### Municipalities:

- Kevin Hann, Chair, Hampstead
- Jim Wieprecht, Vice Chair, Taneytown
- John Dick, Westminster
- Gary Dye, New Windsor
- Delbert Green, Manchester
- Mayor Perry Jones, Union Bridge
- Rodney Kuhns, Manchester
- Alex Perricone, Manchester
- Kevin Rubenstein, Sykesville
- Kevin Smeak, Taneytown
- Dick Swanson, Mount Airy

#### CC LRM:

- Brenda Dinne
- Glenn Edwards
- Chris Heyn, Director
- Claire Hirt
- Byron Madigan
- Kelly Martin
- Denise Mathias
- Zach Neal
- Janet O'Meara
- Pat Varga
- Hannah Weber

#### Health Department:

- Richard Brace

#### CCG Others:

- Andy Watcher, CC DPW
- Bryan Bokey, CC DPW
- Jason Green, CC DPW
- Lydia Rogers, CC M&B

#### Guest Speakers:

- Karen Titus, CWP
- Amanda Pollack, CWP

### 1. Opening Statement

#### Chair – Kevin Hann

Mr. Hann opened the meeting at 2:31 PM. He shared that the Environmental Symposium on October 28, 2023, was very good and well attended.

#### Vice Chair – Jim Wieprecht

Mr. Wieprecht agreed that the Symposium was a nice event.

### 2. Approval of Meeting Summary – October 25, 2023

Approval of the October meeting summary was discussed. No changes were made.

**APPROVAL OF MINUTES:** Motion was made by Dick Swanson and seconded by Mayor Perry Jones to approve the October 25, 2023, meeting summary. Motion carried.

### 3. Center for Watershed Protection Overview – Karen Titus and Amanda Pollack

- Karen Titus shared background on the Center for Watershed Protection (CWP), including information about membership and the 2024 webcast series. Carroll County is currently a member.
- She briefly reviewed some of the services that CWP offers. While CWP is often known for its training and research, consulting services are also offered. Services offered by CWP include MS4 assistance, with work completed for Baltimore County shared as an example.
- Amanda Pollack provide additional examples of technical assistance CWP has provided.

- Ms. Titus concluded with information about training programs and the annual conference. The 2024 CWP National Watershed and Stormwater Conference, to be held April 8-11 in Kansas City, Missouri.

*Reference/Attachment:*

- *Presentation: Center for Watershed Protection - Carroll County Water Resource Coordination Council*

#### **4. Water Resources Element (WRE 2024) Update – Brenda Dinne**

- Task 1.2: Automation of Portions of Buildable Land Inventory Model: Task completed. Possible add-on of details in technical memo.
- Task 2: Groundwater Allocability: Task completed.
- Task 3: Emerging Contaminants: Task completed.
- Task 4: MDE TIPP Spreadsheet Comparison: TIPP spreadsheets and technical memo received October 27. Will be reviewed to determine if the results can be used for the 2023 NPDES Annual Report.
- Task 5: Climate Change Impacts: Final technical memo received November 16. Task completed.
- Task 6: Update 2010 WRE Supporting Documents: Work on Task 6 is in progress. Hazen will be contacting each municipality shortly to update the information in Appendix A of the 2009 Carroll County Alternatives Evaluation report.

*Reference/Attachment:*

- *N/A*

#### **5. Municipal Stormwater Projects Update – Janet O’Meara**

- Given the shorter amount of time between WRCC meetings this month, there were no additional updates.
- Ms. O’Meara indicated that Kelly Martin is working on a grant application for the Robert’s Field wet pond and will be requesting a letter of support from the Town of Hampstead.

*Reference/Attachment:*

- *N/A*

#### **6. Other**

- December WRCC Meeting: The next meeting will be held on December 20. Pat Varga will give an overview of FEMA’s National Flood Insurance Program (NFIP) and the Community Rating System (CRS).
- Calendar of Tentative Agenda Topics: Ms. Dinne shared the tentative guest speakers/topics that have already been arranged for the WRCC meetings through May 2024. The topics are subject to change.
- Water Levels: Ms. Dinne noted that Zach Neal would be sending out an email with the hydrologic update since he could not attend the meeting today. Mayor Jones mentioned that the fire departments are starting to have trouble finding water sources to fill their trucks.
- 2023 NPDES Annual Report: Ms. Hirt indicated that the staff team is still crunching through assembly of the Annual Report. An initial draft for staff review is expected before Thanksgiving. It will then be circulated to the municipalities. Per the permit, the TMDL status will be in a separate document moving forward.
- NPDES Compliance Specialist: Ms. O’Meara thanked Mr. Hann for agreeing to sit on the interview panel for the open NPDES Compliance Specialist position.
- Outfall Screenings: Glenn Edwards is currently working on outfall screenings per the permit. Mr. Edwards will be contacting the municipalities to participate in the screenings with municipal limits.

- Annual NPDES Training: Ms. Hirt thanked everyone who attended the annual training in November.
- Maryland Municipal Stormwater Association (MAMSA): Based on information shared at the November 2 MAMSA meeting, Mr. Heyn noted some of Maryland Department of the Environment's (MDE) top priorities for 2024.
  - ◆ Environmental Justice (EJ) will impact many grant opportunities as it becomes a higher priority for grant awards.
  - ◆ MDE is incorporating climate change across the board, as demonstrated through the A-StoRM initiative. Climate change impacts have been incorporated to the revised stormwater regulations that MDE is drafting. MDE will submit the draft to the Stakeholder Consultation Workgroup, on which Mr. Heyn sits. Mr. Heyn will share the draft with the municipalities at that time. MDE intends to have a final draft out for public comment in June.
  - ◆ MDE will be stepping up enforcement following complaints from environmental groups. This effort includes a review of MDE's fees for services and likely increases to ensure MDE is recouping costs. Enforcement will be focused primarily on repeat offenders with industrial stormwater permits and those who knowingly don't follow the rules.
  - ◆ MDE wants to increase its customer service. Mr. Hann noted that the Town's experience with MDE and grant funding for PFAS work has been very positive. MDE has responded quickly.
  - ◆ Maryland anticipates falling short of reaching its 2025 TMDL goals for the Chesapeake Bay. As a result, there will likely be additional changes and requirements to the next generation permits.
- Lead & Copper Rule Training: Mr. Hann shared dates for upcoming virtual training to be held on December 11 and 14, 2023, from 9 AM to 1 PM.
- Upcoming Legislative Session: Mr. Heyn said over 3,000 bills have been pre-filed for the Maryland General Assembly's upcoming legislative session, ten of which are MDE's. Housing, the overall review process, and solar are expected to be hot topics.

*Reference/Attachment:*

- *Calendar of Tentative Agenda Topics*

## 7. Adjournment

The meeting adjourned at 3:19 PM.

**MEETING ADJOURNMENT:** Motion was made by Jim Wieprecht and seconded by Dick Swanson to adjourn the November 15, 2023, meeting. Motion carried.

### **Upcoming Meetings:**

- ☐ *Regular Monthly Meeting – Wednesday, December 20, 2023*



CENTER FOR  
**WATERSHED  
PROTECTION**

---

**Carroll County Water  
Resource Coordination  
Council**

Karen Titus  
Director of Membership & Training

Amanda H. Pollack, P.E.  
Water Resources Engineer

## About CWP

National non-profit founded in 1992

Mission to advance clean water resources and healthy ecosystems through responsible land and water management

Programs include research, training, membership and watershed and stormwater services

22 staff, headquartered in MD with offices in VA, PA, , NJ, NY, SC, and MI

[www.cwp.org](http://www.cwp.org)



TOTAL CWP MEMBERS

**2,200** and growing

**Membership benefits include:**

- Free or discounted CWP webcasts
- Free Lunch & Learns
- Discounted rates on conferences & training
- Access to 2,000+ resources in our Online Watershed Library (OWL)
- Professional networking opportunities
- Social media promotion and more!

# Join our Network!

Join a network of professionals dedicated to advancing watershed and stormwater management

# 2024 Webcast Series

Jan 24 – Illicit Discharge Detection and Elimination (IDDE)

Feb 21 – Stormwater Funding

Mar 20 – New Tools for Stormwater Management

May 15 – Design with Maintenance in Mind

Jun 19 – Biochar: Applications and Research

Jul 24 – MS4 Permit Basics

Sep 18 – Behavior Change

Oct 23 – Agriculture and Watershed Management

Nov 20 – Green Infrastructure

CENTER FOR  
**WATERSHED  
PROTECTION**  
Webcasts

**For more  
information,  
contact:**

**Karen Titus  
kmt@cwpr.org  
(410) 696-3973**

# Watershed & Stormwater Consulting Services

Direct technical assistance to state and local governments, watershed organizations, environmental consultants and other clients.

- ❖ Watershed assessments and plan development
- ❖ Green infrastructure and stormwater retrofit design
- ❖ Stormwater design manual development
- ❖ Local code and ordinance review and updates
- ❖ GIS Services





# MS4 Assistance



Preparing Annual Progress Report



Developing and performing training –  
IDDE, Pollution Prevention



PCB Source Assessment analysis



Outfall screening prioritization

# Baltimore County Outfall Screening Risk Factor Analysis

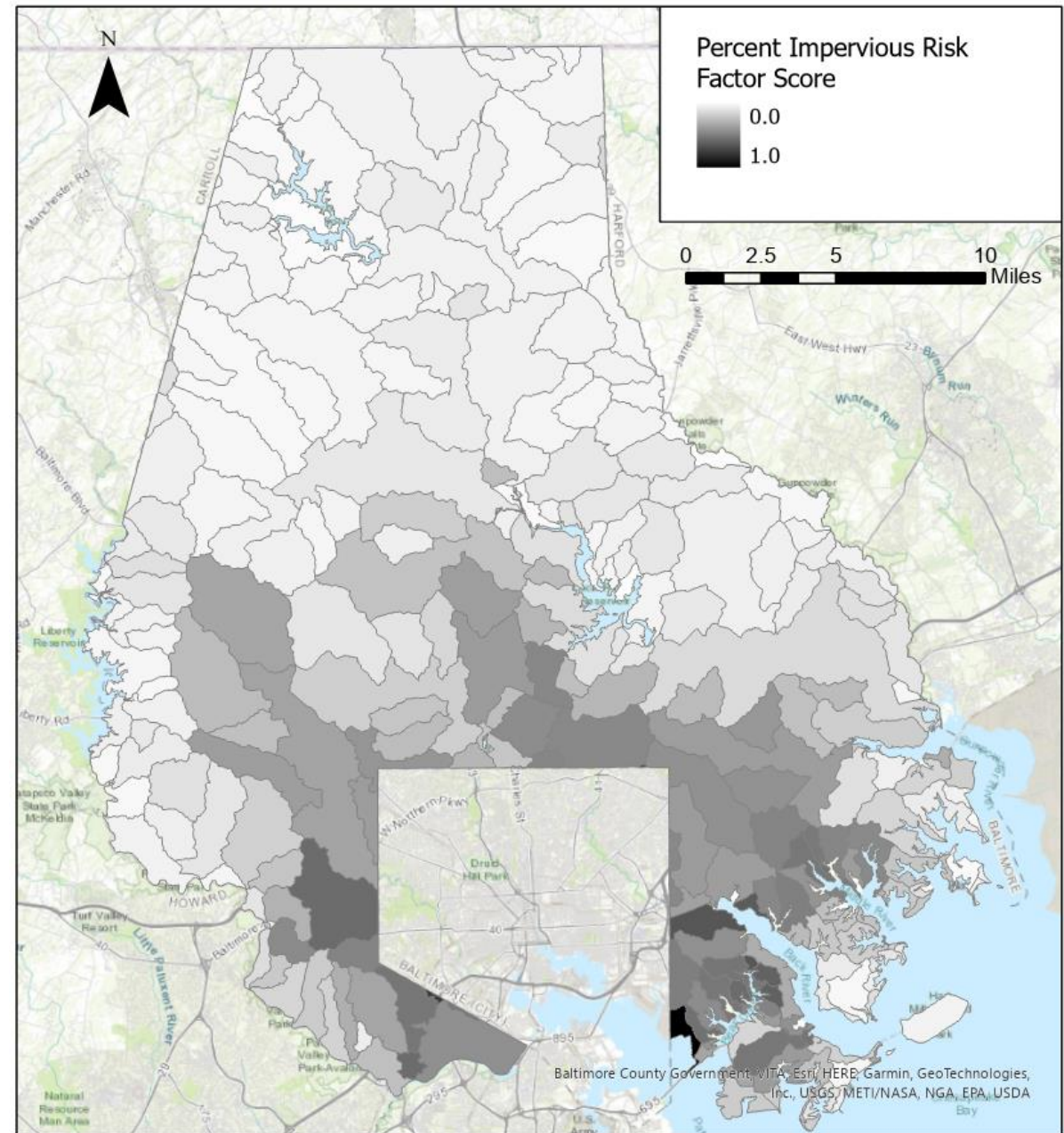
- 12,201 outfalls
  - 2,064 Major (>36" diameter)
  - 9,651 Minor (<36" diameter)
  - 486 unknown
- Used GIS to evaluate risk factors at the scale of subwatersheds
  - Baltimore County has 269 subwatersheds
  - Subwatershed sizes range from 1.13 acres to 12,925.60 acres
- Identified risk factors that may indicate the potential for illicit discharges and evaluated 12 risk factors
- Developed outfall screening prioritization tool

## MS4 Permit requirements:

- screening at least 150 outfalls per year
- ensuring screening efforts reflect priorities based on outfall-specific pollution potential
- adaptively managing the prioritization of outfalls based on completed screenings/investigations or changed conditions

# Percent Impervious

- ❑ Higher percentages of impervious cover are typically more urbanized areas
- ❑ Urbanized land uses are generally associated with more point sources of pollution
- ❑ More impervious closer to City of Baltimore
- ❑ Percent Impervious per subwatershed ranged between 0% and 68.1%



# Illicit Discharge Potential (IDP) Scores

Individual Risk Factor	Weight in IDP Calculation
Percent Impervious	3
Population Density	3
Land Use	3
Infrastructure Access Point Density	2
TMDLs	2
SSO Density	2
Septic System Density	1
Sanitary Sewer Age	1
Storm Sewer Development Age	1
Hot Spot Density	0.5

- IDP scores: weighted average of the ten (10) individual risk factor scores
- Higher risk factor weights based on the increased probability for illicit discharges
  - Weight of 1 used due to dataset incompleteness or unreliability
  - Hot Spot Density was assigned a weight of 0.5 as many hot spot points in the County’s dataset were identified based on presence of trash, which is not a reliable indicator of illicit discharges

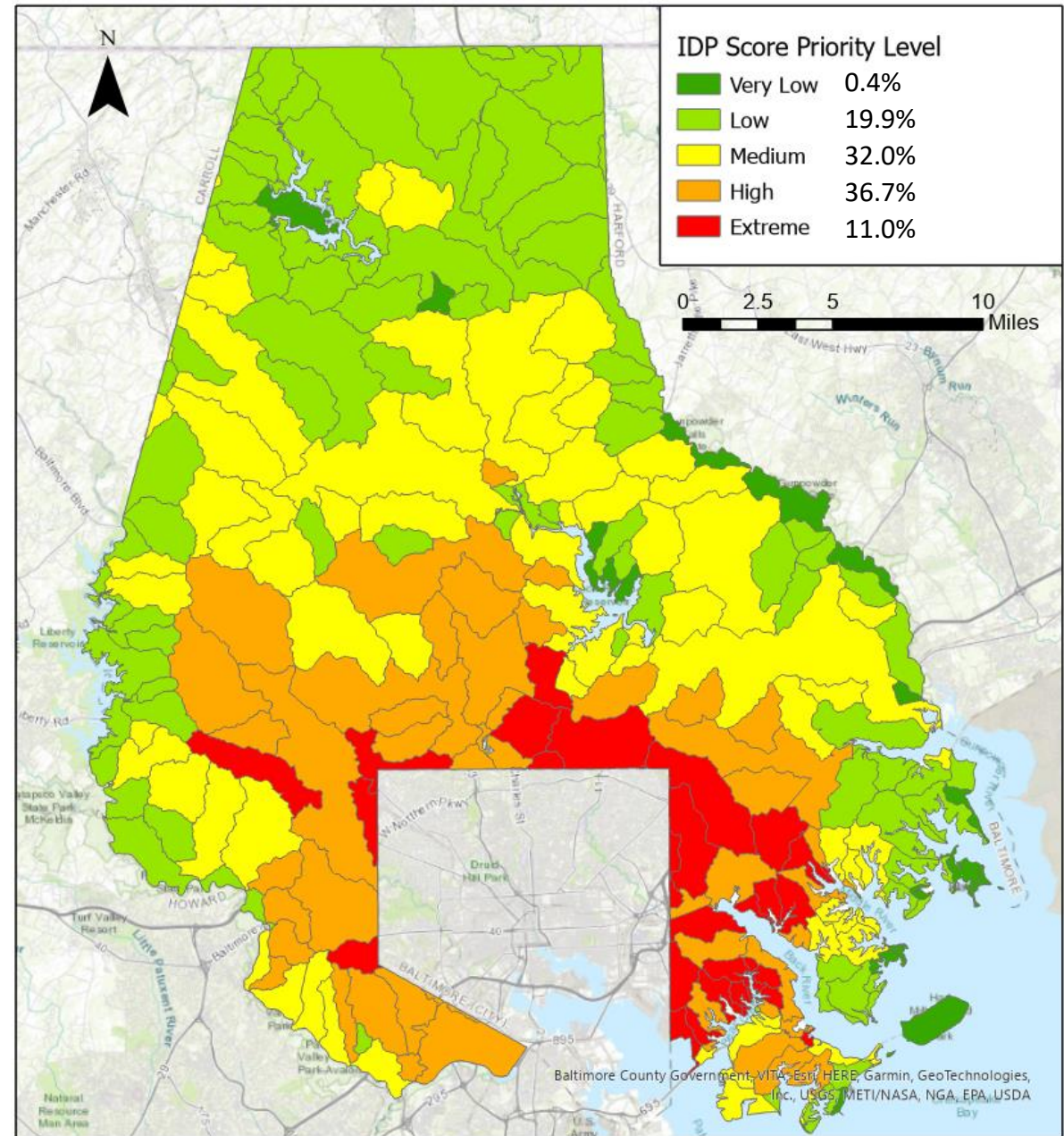
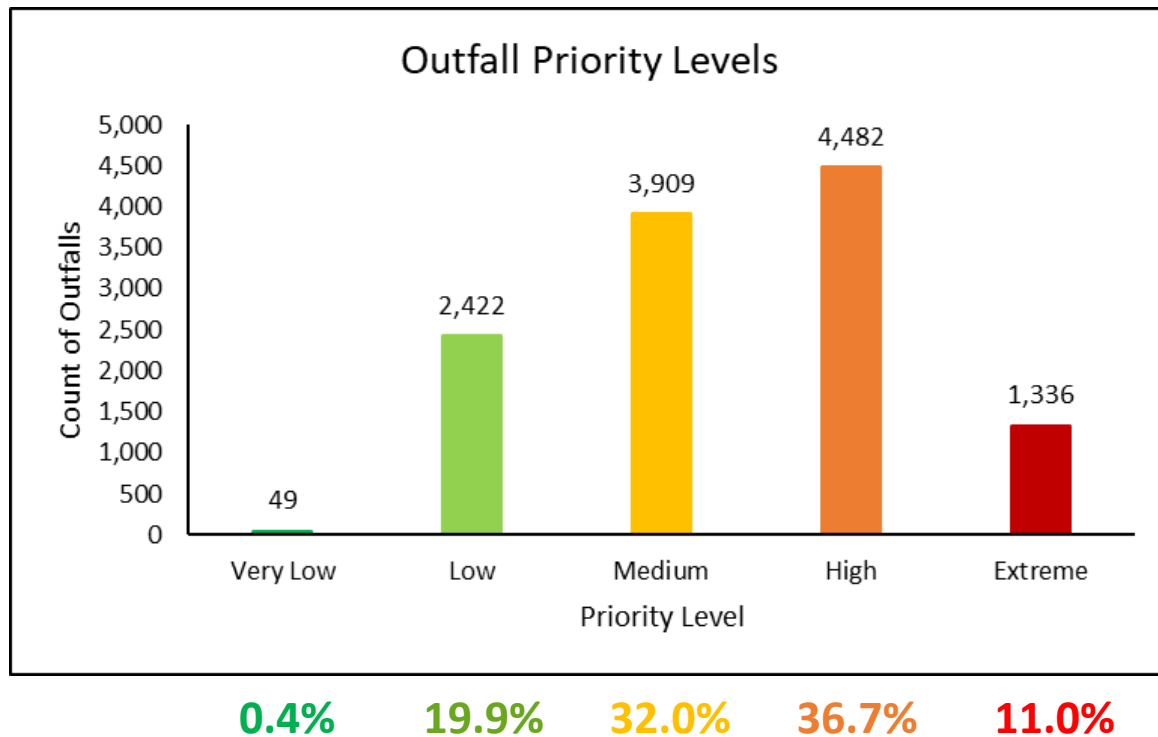
$$\text{Subwatershed IDP Score} = \frac{\sum(\text{Risk Factor Score} \times \text{Risk Factor Weight})}{\sum(\text{Risk Factor Weight})}$$

Outfall Prioritization	Risk Factor Score (0 - 1)										Average Illicit Discharge Potential (IDP) Score
	Weight	3	3	3	0.5	2	1	2	2	1	
Subwatershed Name <i>(Subsheds in italics have no outfalls)</i>	Percent Impervious	Population Density	Land Use	Hot Spot Density	Sanitary Sewer Overflow (SSO) Density	Storm Sewer Development Age	Infrastructure Access Point (IAP) Density	Total Maximum Daily Loads (TMDLs)	Septic System Density	Sanitary Sewer Age	
	0.11	0.01	0.64	0.18	0.00	0.33	0.01	0.50	0.31	0.00	0.22
	0.32	0.04	0.58	0.31	0.09	0.17	0.09	1.00	0.00	0.43	0.32
	0.38	0.35	0.75	0.00	0.00	0.17	0.21	1.00	0.00	0.81	0.42
	0.07	0.01	0.37	0.00	0.00	0.28	0.00	1.00	0.03	0.35	0.22
	0.18	0.02	0.44	0.03	0.01	0.23	0.07	1.00	0.02	0.40	0.26
	0.27	0.25	0.60	0.00	0.07	0.22	0.29	1.00	0.00	0.57	0.37
	0.64	0.25	0.82	0.65	0.10	0.35	0.53	1.00	0.00	0.77	0.53
	0.66	0.26	0.54	0.27	0.09	0.36	0.23	1.00	0.00	0.65	0.44
	0.06	0.06	0.55	0.00	0.00	0.28	0.02	0.50	0.44	0.00	0.20
	1.00	0.23	0.50	0.00	0.02	0.41	0.08	0.83	0.00	0.78	0.45
	0.26	0.17	0.66	0.03	0.01	0.15	0.78	0.17	0.00	0.30	0.31
	0.41	0.26	0.64	0.00	0.00	0.00	0.00	0.83	0.00	0.58	0.33

# Outfall Priority Levels

Outfall priority assigned based on the subwatershed priority.

As expected, the subwatersheds closest to the City of Baltimore are of higher risk for illicit discharges



# Outfall Screening Scenario Tool

## Assumptions for Staff Needs in Scenarios

Cells with light blue fill are for data entry.

Cells with white fill are formulas that should not be overwritten.

Total Hours per Year per FTE	Percent Available for Outfalls	Available Hours per Year
2,080	60%	1,248

Screening Category	Assumption	Outfall Type	Hours
First Screening	# Hours per Screening	All	0.5
	# Hours per Investigation	Major	2
	# Hours per Investigation	Minor	1
	# Hours per Investigation	Unknown	1
Previously Screened	# Hours per Screening	All	0.5
	# Hours per Investigation	Major	2
	# Hours per Investigation	Minor	1
	# Hours per Investigation	Unknown	1

Investigation Assumption	Priority Level	Value
Percent of Screenings that require an Investigation	Extreme	40%
	High	30%
	Medium	10%
	Low	5%
	Very Low	5%

- Excel Tool to assist with staffing and tracking
- Counts of major and minor outfalls in each Priority Level
- Scenarios based on user-entered assumptions
  1. How many FTE would we need to screen and investigate each Priority category of outfalls annually?
  2. How many years would it take to screen all unscreened outfalls of each priority at the rate of 150 screening/year?
  3. Using a pre-determined number of FTE staff, how many outfalls can be screened and investigated annually based on the screening frequencies and assumptions?

# Technical Assistance



Identifying water quality improvement projects



Grant applications and grant administration



“Circuit Rider” to provide stormwater staff support

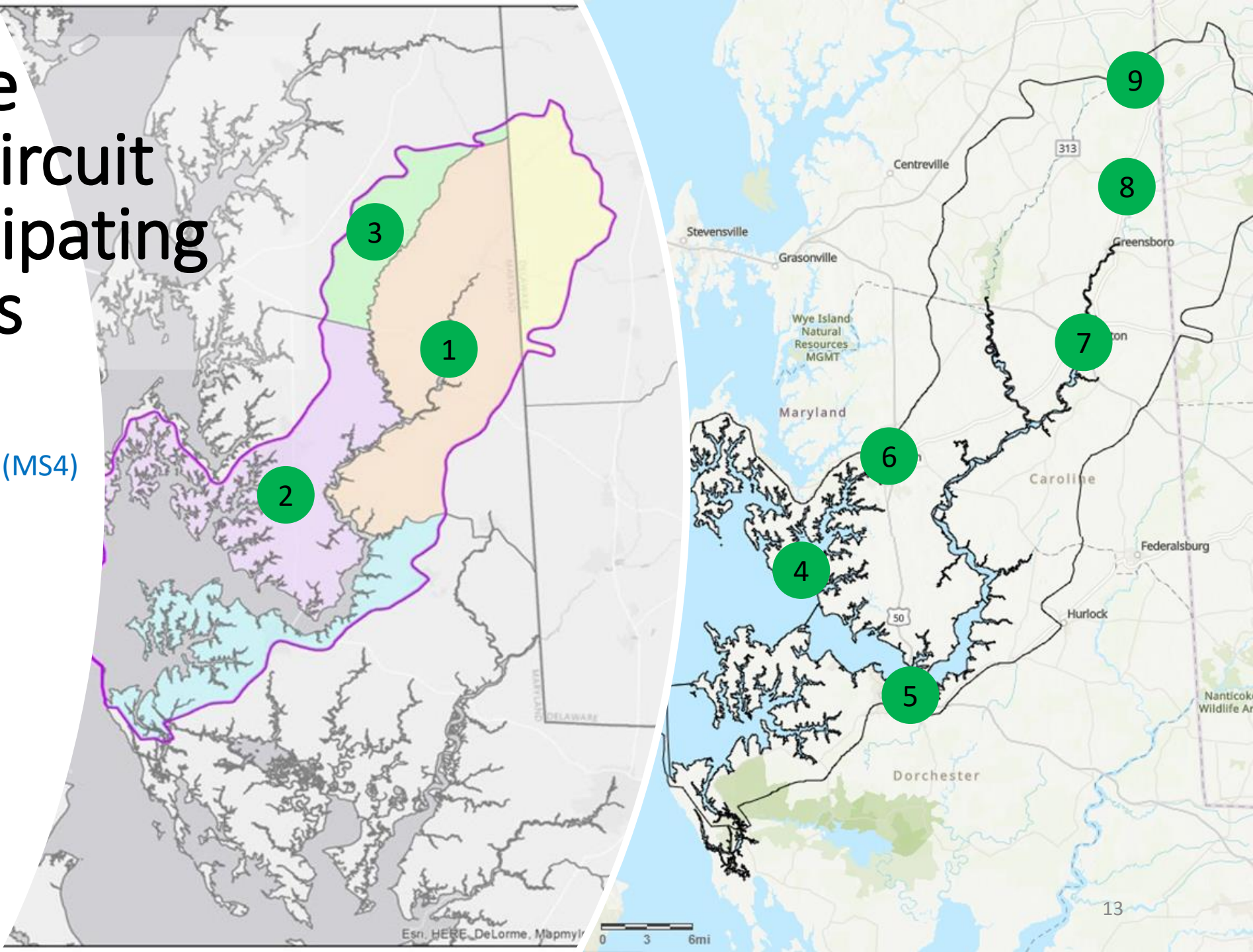


Project Management during design and construction

# Envision the Choptank Circuit Rider Participating Jurisdictions

1. Caroline County
2. Talbot County
3. Queen Anne's County (MS4)
4. Town of Oxford
5. City of Cambridge
6. Town of Easton (MS4)
7. Town of Denton
8. Town of Goldsboro
9. Town of Templeville

ENVISION<sub>THE</sub>CHOPTANK





# Envision the Choptank Technical Assistance Circuit Rider Scope of Work

## TASK 1: Identify and assess potential projects

Meet with each jurisdiction

Review previous studies and projects

Evaluate new project ideas

Coordinate goals and priorities

## TASK 2: Carry out prep work

Site visits and desktop analysis to assess project feasibility

Meet with property owners and stakeholders

Develop project scope of work

## TASK 3: Fundraise for project design and implementation

Distribute monthly funding opportunities handout

Prepare funding applications

Grant application debriefs

## TASK 4: Supply project and grant management

Administer grants, write progress reports

Write RFP's and bid documents, attend pre-bid meetings, review bids

Work with consultants and contractors

## TASK 5: Enhance project implementation efficiency

Evaluate regional project opportunities

Share project and grant lessons learned

Assist with Comprehensive Plan updates

Catalog BMPs and track maintenance and inspections

## TASK 6: Engage with workgroups

Envision Steering Committee

Working with Local Governments

Disenfranchised Communities

Advancing Large Scale Restoration

Education Strategy

Presentations to elected officials

# Envision the Choptank Funding



## ❖ Regional Capacity Building Initiative Grant

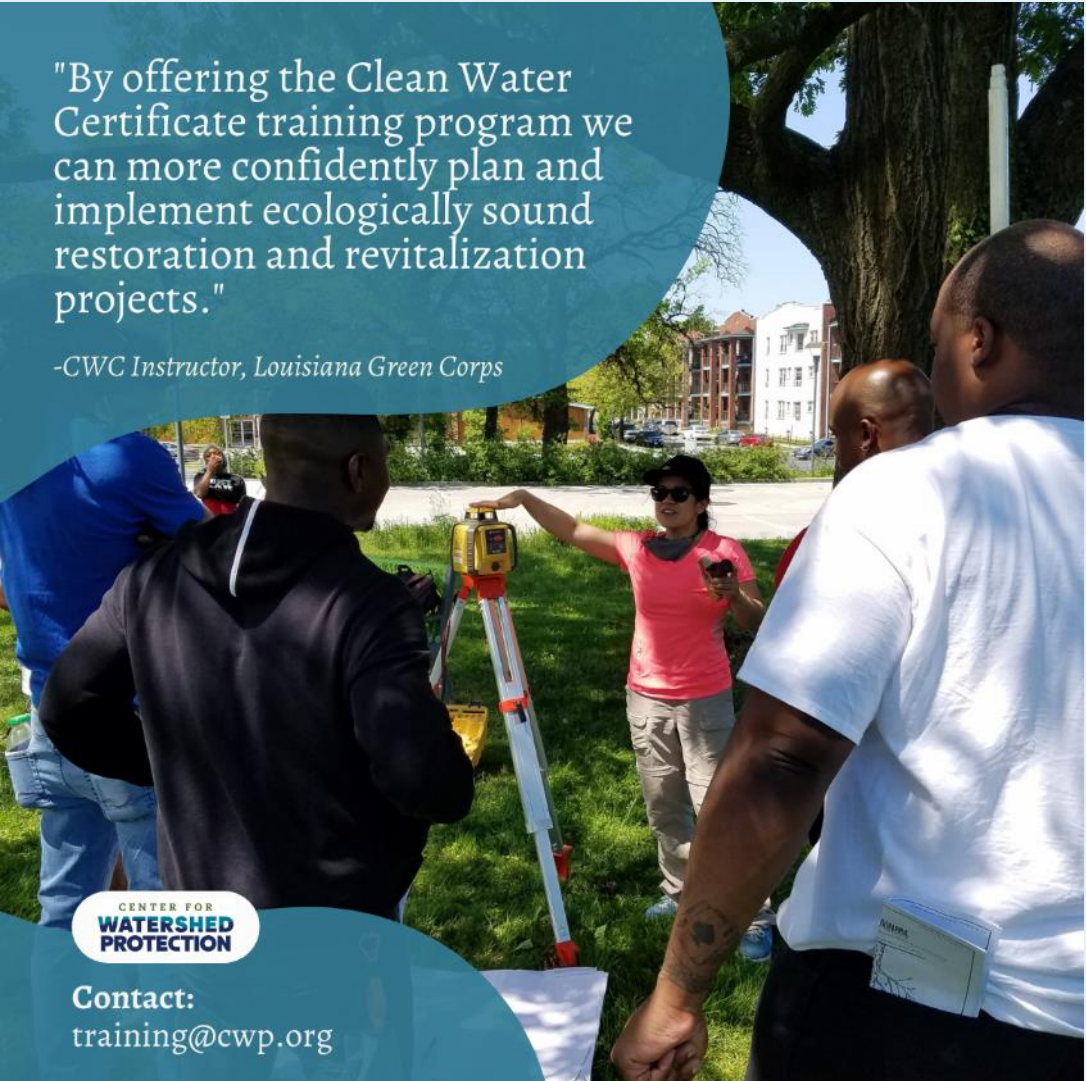
- 5-year capacity building program, which includes training and technical assistance to build a sustainable partnership
- Funds the Common Agenda update (5-year workplan)
- Includes funding for a Partnership Coordinator, Agricultural Landowner Assistance Coordinator, and Technical Assistance Circuit Rider
- Eligible for additional years of funding by providing collaborative scopes of work on annual basis

## ❖ Maryland 319 Grant (Nonpoint Source Management Program) to fully fund the Technical Assistance Circuit Rider for 5-years

## ❖ Apply for grants to implement projects

# Clean Water Certificate (CWC) Training Program

- Entry-level Green Infrastructure Construction & Maintenance Training
- Nationally-accredited program
- Goals:
  - ✓ Provide the stormwater industry access to an “on the job ready” workforce,
  - ✓ Expand the skilled stormwater industry workforce to help meet the demand for stormwater installation and maintenance, and
  - ✓ Increased opportunity for individuals in low-income communities, under or unemployed individuals to secure a living wage job leading to financial stability



"By offering the Clean Water Certificate training program we can more confidently plan and implement ecologically sound restoration and revitalization projects."

*-CWC Instructor, Louisiana Green Corps*

CENTER FOR  
**WATERSHED  
PROTECTION**

Contact:  
[training@cwpg.org](mailto:training@cwpg.org)



CENTER FOR  
**WATERSHED  
PROTECTION**

2024 National Watershed & Stormwater Conference

**APRIL 8-11, 2024 • KANSAS CITY, MISSOURI**

**Now accepting abstracts!**  
Deadline: December 22, 2023

NATIONAL WATERSHED AND  
STORMWATER CONFERENCE | **2024**

APRIL 8 – 11, 2024

The InterContinental Kansas City at the Plaza  
Kansas City, Missouri

# THANK YOU

---

**Karen Titus**

Director of Membership & Training

[kmt@cwpa.org](mailto:kmt@cwpa.org)

410.696.3973

**Amanda H. Pollack, P.E.**

Water Resources Engineer

[ahp@cwpa.org](mailto:ahp@cwpa.org)

410.696.3945





**Calendar of Tentative Agenda Topics**  
**October 2023 – May 2024**  
*(Subject to Change)*

**October 25**

- Lead & Copper Rule Inventory Assistance – Eric Dutrow, Maryland Rural Water Association

**November 15**

- Center for Watershed Protection Overview & Projects – Karen Titus
- PFAS Status & Coordination – Discussion

**December 20**

- National Flood Insurance Program & Carroll County Community Rating System Status – Pat Varga

**January 24**

- Trout Conservation – Scott Lowe, Trout Unlimited
- PFAS Status & Coordination – Discussion

**February 28**

- Stream Temperature Data Evaluation – Byron Madigan
- Drought - Discussion

**March 27**

- Guest: TBD

**April 24**

- Guest: TBD

**May TBD**

- Tentative MDE tour of sand filter facilities. Date subject to MDE availability.

*Note: WRE Update Status AND Municipal Stormwater Projects Update will be on the agenda each month*